



**CELEBRATION
HEALTH**

FLORIDA HOSPITAL

The skill to heal. The spirit to care.®

2013
COMMUNITY HEALTH NEEDS ASSESSMENT
Summary

Introduction

Florida Hospital conducted its 2013 Community Health Needs Assessment in two parts: a regional needs assessment for the three counties in Central Florida followed by Assessments focused on and tailored to our seven hospital facilities in the Tri-County area of Orange, Seminole and Osceola Counties.

The larger Assessment is posted on our web site.

This document is specific to **Florida Hospital Celebration Health**.

Executive Summary

In Central Florida, there is a well-established tradition of healthcare organizations, providers, community partners, and individuals committed to meeting our local health needs. The region is home to several respected hospitals that are ranked in the nation's top 100, a Level One Trauma Center, nine designated teaching hospitals and the University of Central Florida, College of Medicine. Even with the current economic challenges and healthcare's changing landscape, these organizations remain committed to serving Central Florida.

In spite of this dedication to meeting local health needs, there is still work to be done. In the center of the Sunshine State, 1.8 million people live in Orange, Osceola, and Seminole Counties. Of these residents, approximately 8.8% are unemployed; housing affordability remains a challenge; poverty rates for children, families, and the elderly are up to three times higher among racial and ethnic minorities; over one-third of children are raised in single-parent households; crime rates are above the national average; cancer is the leading cause of death; public transportation and carpooling are underutilized to the point where noise and traffic pollute the urban landscape; and in some zip codes, less than 20% of residents hold a bachelor's degree or higher.

These societal challenges often prevent Central Floridians from achieving the level of social, physical, environmental, and spiritual well-being that is necessary for maintaining health and quality of life. Community health needs assessments take into account these four areas of well-being, serve as a baseline of health status in a given community, and are used to plan social and medical interventions relevant to the population.

Three not-for-profit clinical hospitals – Florida Hospital, Orlando Health, and Lakeside Behavioral Health – alongside the Florida Department of Health in Orange County collaborated in 2012 and 2013 to create a Community Health Needs Assessment for Orange, Osceola, and Seminole Counties. The “CHNA” would describe the health of Central Floridians for the purpose of planning interventions relevant to the community. These four groups also collaborated with other community agencies under the umbrellas of “Healthy Orange Florida” in Orange County, “Healthy Seminole” in Seminole County, and “Community Vision” in Osceola County. A list of Healthy Orange members (who provide services to the Celebration community) can be found in Attachment 1.

Community Vision contracted with the Health Council of East Central Florida, Inc. (Health Council) to use the Healthy Measures for East Central Florida online Health Community Network (HCN) tool. This customizable web-based community dashboard, designed by Healthy Communities Institute (HCI), delivers access to high-quality

data and decision support. The HCN provides health indicator tracking, best practice sharing, and community development to help improve the health and environmental sustainability of Celebration and surrounding communities. This tool was jointly funded by the collaboration and is publicly available to the community as a resource.

Over 100 health indicators were collected and analyzed for this report; health indicators were then categorized and ranked using the Assessment Protocol for Excellence in Public Health (APEXPH) modified Hanlon Method. This method considered three criteria: the magnitude of the problem, as measured in terms of the percent of the population with the health problem; the severity of the program in terms of mortality, morbidity, hospitalizations, economic loss or community impact; and the predicated effectiveness of the intervention in preventing the health problem.

Data sources included:

- Over 70 key stakeholder interviews with people representing the broad interests of the community – 2013
- The Health Department MAPP assessments – 2012
- The Florida Department of Health State Health Improvement Plan (2012-2015)
- The 2012 National Prevention Strategy
- Healthy People 2020

These data were used to identify the top health priorities in each county. The **tri-county needs assessment conducted in Orange, Osceola, and Seminole Counties** can be found on the Florida Hospital and Orlando Health websites. Utilizing this tri-county assessment data as a foundation, Florida Hospital conducted individual assessments for each of the seven Florida Hospital campuses located in the Central Florida tri-county region:

- Florida Hospital Altamonte – Seminole County
- Florida Hospital Apopka – Orange County
- Florida Hospital Celebration Health – Osceola County
- Florida Hospital East Orlando – Orange County
- Florida Hospital Kissimmee – Osceola County
- Florida Hospital Orlando including Florida Hospital for Children – Orange County
- Winter Park Memorial Hospital, a Florida Hospital – Orange County

This document is a campus-specific Community Health Needs Assessment for Florida Hospital Celebration Health and the community it serves.

Florida Hospital Needs Assessment Process

The campus assessment process used the following steps:

- A. The **tri-county assessment** was conducted by the Community Vision partners including Florida Hospital.
- B. Florida Hospital formed a **Community Health Needs Assessment Committee (CHNAC)**. The CHNAC is a sub-committee of the Florida Hospital Board of Trustees and meets quarterly. The CHNAC's role was to review and analyze the data in the tri-county assessment, support the individual campus needs assessments, and approve the community health priorities.

The CHNAC is comprised of external community members/stakeholders and senior hospital leaders. The community members in particular provide strong representation of low-income, minority and underserved populations. (Attachment 2)

- C. **Hospital Health Needs Assessment Committees (HHNAC)** were convened on each campus and included case management, nursing, medical staff, administration, community advisory/foundation board representatives, and other clinical and non-clinical strategy individuals (Attachment 3).

The HHNAC on each campus reviewed the primary and secondary data in the tri-county assessment. They also analyzed hospital inpatient and emergency department utilization data to determine the top reasons for inpatient admissions and ED use.

The HHNAC used a "Decision Tree" to determine campus priorities based on the intensity of need, current community initiatives addressing the issue, Florida Hospital's capacity to impact these issues, and the opportunity for collaboration with other hospitals and community partners.

The Apopka Health Needs Assessment Committee identified two top priorities to address:

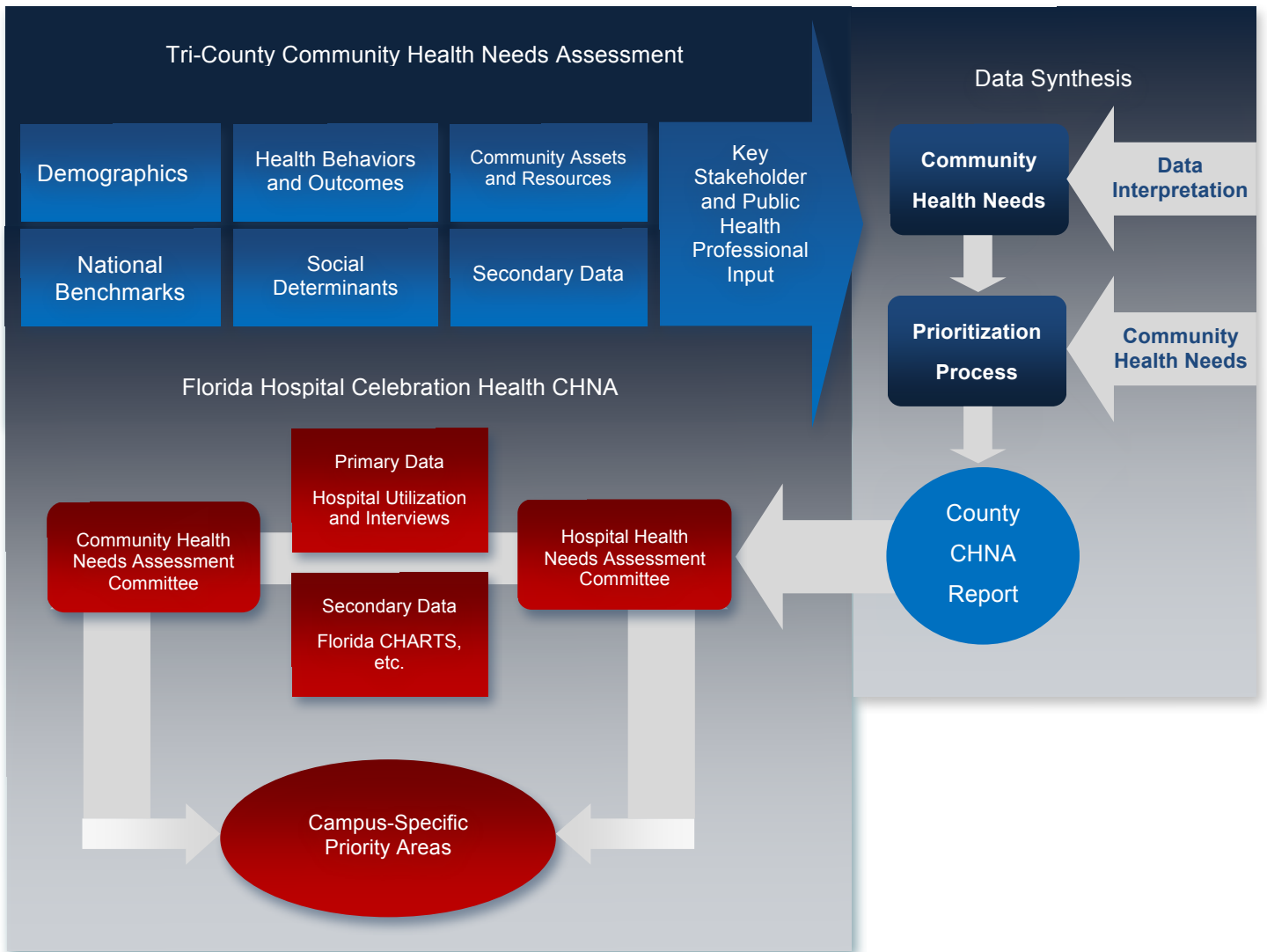
1. Obesity
2. Chronic Disease Management

- D. These priorities were presented to the **Community Health Needs Assessment Committee (CHNAC)**. The CHNAC approved the campus-specific and global Community Health Needs Assessments, as well as the campus-specific priorities, on October 30, 2013.
- E. The **Florida Hospital Board** approved the campus-specific and global Community Health Assessments on December 4, 2013.

This document describes the process that led to the identification of campus-specific priorities for future development of interventions that address and improve the health status of Celebration-area residents.

The Community Health Needs Assessment process for Florida Hospital Celebration Health is visually represented below.

Florida Hospital Celebration Health Community Health Needs Assessment Process



Hospital Description

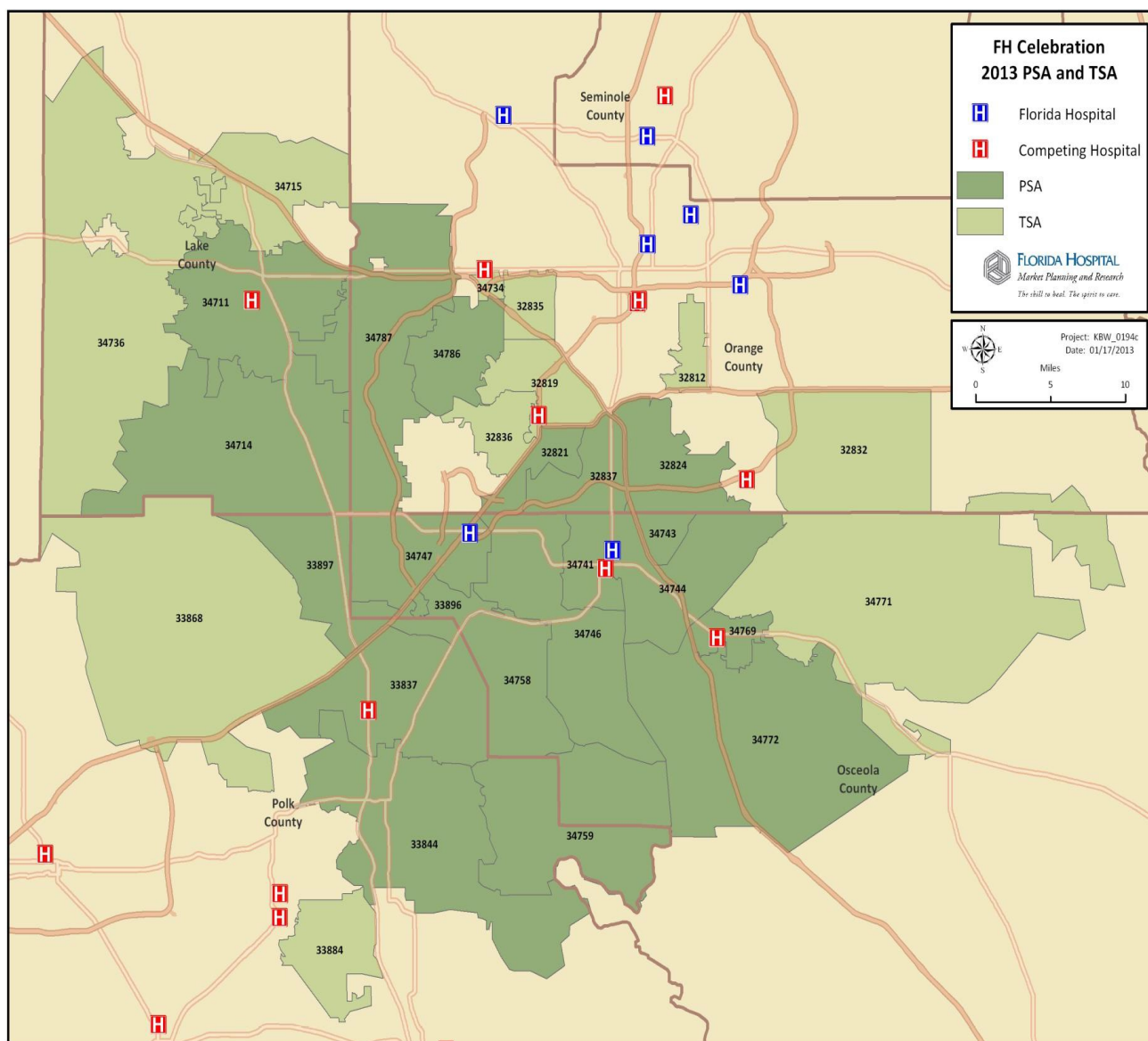
Florida Hospital Celebration Health is a 172-bed, state-of-the-art hospital that serves as a showcase of innovation and excellence in healthcare. It is a not-for-profit hospital and part of the larger Florida Hospital System, a faith-based seven-campus system in the tri-county area. Established in 1997, Florida Hospital Celebration Health was designed to serve as a cornerstone of health in the Disney-planned community of Celebration. A healthy community was the driving force in the development of Celebration Health and the goal is to achieve optimum health with a focus on the mind, body, spirit, and social forces that affect the health of a community. Annually

Florida Hospital Celebration Health serves 67,721 patients in the emergency department; 75,967 patients via outpatient treatment; 13,518 patients on an inpatient basis; delivers 2,110 babies; and performs 8,141 surgeries.

In addition to advanced clinical service in gynecology, neuroscience, orthopedics, bariatric surgery, and genetics, Celebration Health is also home to a fitness center, day spa, and the Nicholson Center – a 54,000 square foot advanced research and training center. Other services include a 24-hour emergency department; a global robotics institute; seaside imaging; occupational medicine; oral surgery; center for chronic disease management; primary care; behavioral health; plastic surgery; and telemedicine. Our reputation for delivering highly efficient, patient-focused, and cost effective care allows us to achieve optimum health and wellness for patients with an emphasis on healing the whole person - mind, body and spirit.

Hospital Service Area

The community of focus for Florida Hospital Celebration Health is our primary service area and includes the town of Celebration zip code of 34747; the Meadow Woods Census Designated Place (32824); the Hunters Creek Census Designated Place (32837); Kissimmee zip codes 34741, 34743, 34744, 34746; and portions of Poinciana (34758). The map below depicts the primary service area for Florida Hospital Celebration Health.

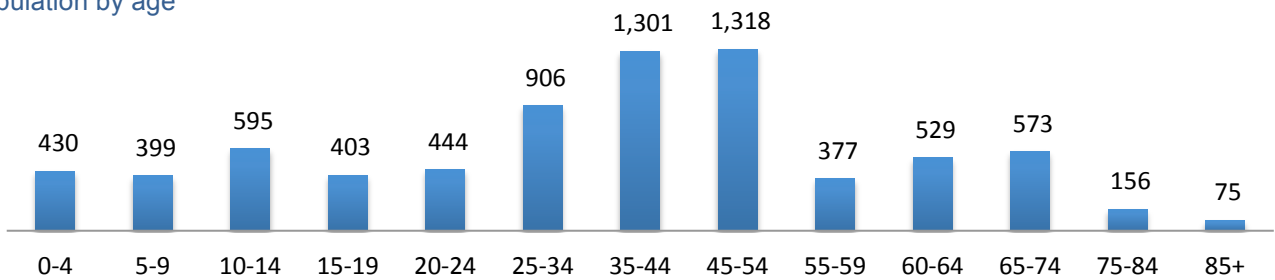


Community Description

Located in the northwest corner of Osceola County, Florida, Celebration is a census designated placed originally planned and developed by the Walt Disney World Company in the early 1990s. Celebration is often cited as an example of “new urbanism” as every aspect of the community was specifically designed and purposed. In 2001, the Urban Land Institute named Celebration “New Community of the Year”. With an area of 10 square miles and a population of just over seven thousand, Celebration has one of the lowest population densities for an urban community in the state. The median household income in Celebration is significantly higher than the state and county averages at \$92,670, only 4.1% of residents are below the Federal Poverty Level, and over 90% of residents self-identify as white. Still, the demographics of the surrounding area are far less affluent and far more diverse. A healthy, vibrant community philosophy and lifestyle was a key driving force in the development of Celebration and thus the built environment promotes active living. There are many parks, restaurants, and recreational areas throughout the town, all of which are walking distance from every housing unit. There is strong community leadership commitment, such as Community Vision whose mission is to bring people and resources together so address community issues. Celebration Health is an active participant in Community Vision.

Demographic Profile of the Celebration Community

Population by age

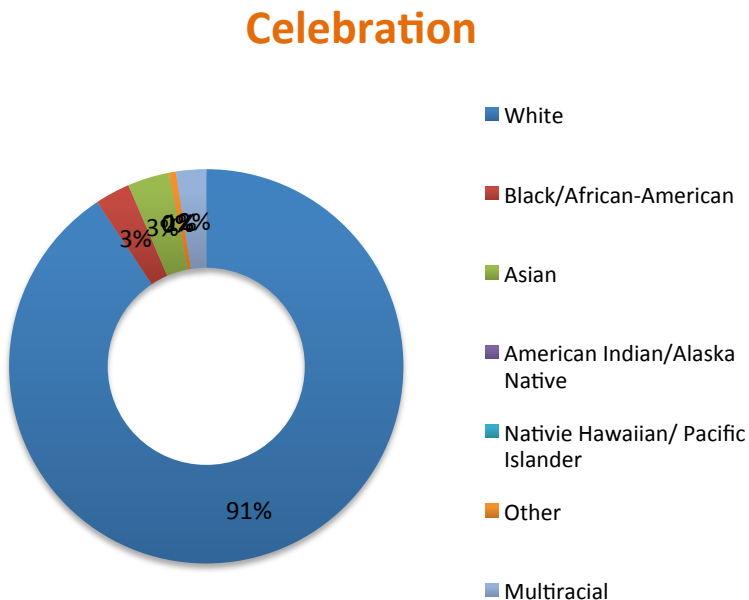


Population by sex

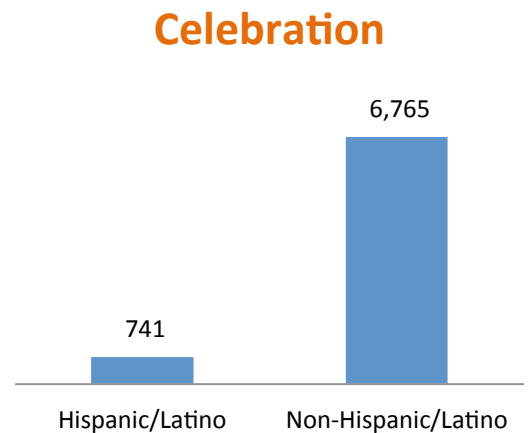
♂ Males: 48.3% (3,660)

♀ Females: 51.2% (3,845)

Population by race



Population by ethnicity



Stakeholder Input Process

Conducting interviews is a powerful method for collecting community data. Interviews facilitated by an unbiased moderator can uncover information that people may be reluctant to share in a more public setting. These data reveal the thoughts and perceptions of key stakeholders and provide an understanding of the pressing issues facing the community. The Health Council of East Central Florida, Inc., a regional, quasi-government health planning agency, conducted the stakeholder interviews.

Key stakeholders for the tri-county social service and health care assessment included individuals with special knowledge of or interest in public health (i.e., health departments); individuals/organizations serving or representing the interests of medically underserved, low-income, and minority populations; persons who represent the broad interests of residents served by the hospitals; and individuals representing large employers and employee interests.

A total of 72 stakeholders representing 44 organizations were interviewed and completed a questionnaire aimed at identifying health barriers, assets, resources, and needs within the region. At least 70% of the Osceola County stakeholders represented and/or provided services to the Celebration Community. The complete key stakeholder questionnaire and a demographic description and organizational affiliation of each stakeholder who participated can be found in Appendices C and D, respectively, beginning on page 151 of the main tri-county community health needs assessment.

A lack of health literacy was cited as a major barrier to attaining improved community health. Regardless of health insurance status, residents are not able to navigate the healthcare system. The Central Florida community was cited as lacking a centralized navigation and eligibility portal to direct people to appropriate, timely and affordable health resources. When asked to describe barriers to health and healthcare in the tri-county region, key stakeholders cited the following: limited resources in the fields of mental health, substance abuse, and dental care; the availability of healthcare resources to the growing population; transportation to and from appointments; and disability status.

Stakeholders said that integration of services is needed to improve the effectiveness and efficiency of the fragmented system of care in Osceola County. Stakeholders also asserted that service organizations tend to operate in silos that result in a duplication of some services and does not maximize appropriate utilization. A need for community-wide collaboration for attaining better health outcomes for all residents was identified.

The Florida Hospital Celebration Health Needs Assessment Committees reviewed the key stakeholder interviews and the secondary data. These data were also reviewed with inpatient hospitalists, community physicians, and key physician leaders in emergency medicine. After considering the tri-county identified needs assessment primary and secondary data, the Celebration team then evaluated internal hospital inpatient and emergency department utilization data and used this information to determine and recommend campus-specific priorities.

Community Health Needs Assessment Committee (CHNAC)

The members of the Florida Hospital Community Health Impact Council (CHiC) comprise the Florida Hospital Community Health Needs Assessment Committee (CHNAC).

The CHiC serves as a subcommittee of the Florida Hospital Board and provides oversight for Florida Hospital's community benefit direction, activities and investments. The CHiC/CHNAC represents the broad community as well as low-income, uninsured and minority populations (including African Americans and Hispanics).

The Community Health Impact Council (CHiC) also reviews and approves strategic community benefit initiatives funded by Florida Hospital. These strategic initiatives are innovative pilots designed to improve the health of the Central Florida community, including Apopka, and reduce preventable medical costs and interventions. The CHiC/CHNAC members are dedicated to identifying, develop, funding, and sustaining community benefit programs that address community needs and strategically align with Florida Hospital's ongoing commitment to improving the health of our community

Public Health

Public health is represented in this needs assessment via CHNAC membership (including a former U.S. Surgeon General) and key stakeholder interviews conducted throughout the tri-county area. The directors of the Department of Health In Osceola and Seminole Counties also participated in the assessment process for their respective counties.

In addition, the Florida Department of Health in Orange, Seminole and Osceola Counties were strategic partners in the creation of this needs assessment.

- Osceola County: Belinda Johnson-Cornett, MD, Director was a leader in the Osceola County Health Leadership Council, which served as the needs assessment committee in that county.
- Orange County: Kevin Sherin, MD, Director, and Lesli Ahonkhai, Chief of the Health Protection Bureau, actively participated in this assessment and are leaders in Healthy Orange.
- Seminole County: former director Mike Napier and Swannie Jett, DrPH, current Director, participated in Healthy Seminole, the needs assessment committee for Seminole County.

All of these public health leaders have experience in community health assessment processes, and conducted MAPP (Mobilizing for Action through Planning and Partnerships) assessments in 2012.

Data Sources

Primary data sources included:

- Top 10 reasons for inpatient admissions at Florida Hospital Celebration – 2012
- Top 10 reasons for emergency department visits at Florida Hospital Celebration – 2012
- 72 key stakeholder interviews with people who understand the needs of the community, including the Celebration area and low-income, minority and underserved populations – 2012

Secondary data sources included:

- Agency for Health Care Administration – 2010-2012
- Behavioral Risk Factor Surveillance System Survey – 2010
- County Health Rankings, University of Wisconsin Population Health Institute & RWJF – 2012
- Florida Community Health Assessment Resource Tool Set (CHARTS) – 2010-2012
- Florida Department of Children and Families – 2010-2012
- Florida Department of Education, National Center for Education Statistics – 2012
- Florida Department of Health, Bureau of Community Environmental Health – 2012
- Florida Department of Health, Bureau of Epidemiology – 2012
- Florida Department of Health, Bureau of HIV/AIDS – 2012
- Florida Department of Health, Bureau of STD Prevention and Control – 2012
- Florida Department of Health, Bureau of Vital Statistics – 2010-2012
- Florida Department of Health, Office of Planning, Evaluation, and Data Analysis – 2010
- Florida Department of Highway Safety and Motor Vehicles – 2012
- Florida Department of Juvenile Justice – 2012
- Florida Youth Substance Abuse Survey – 2010
- Florida Youth Tobacco Survey – 2010
- United States Census Bureau American Community Survey – 2010-2012
- United States Department of Agriculture – 2010-2012
- United States Department of Health and Human Services, Healthy People 2020 – 2010
- United States Environmental Protection Agency – 2012

Data Collection and Analysis

Our data collection process included both primary and secondary research.

For primary research, key stakeholder interviews were conducted by the Health Council of East Central Florida Inc. at various community events. Interview questions were delivered either on a one-on-one basis or in a focus group setting depending on the needs of the key stakeholders. The complete key stakeholder questionnaire and a demographic description and organizational affiliation of each stakeholder who participated can be found in Appendices C and D, respectively, beginning on page 151 of the main tri-county community health needs assessment.

In addition to the stakeholder input, in order to assess help seeking behavior and estimate service utilization for the Celebration community, we staff gathered primary data detailing the top 10 reasons for inpatient admissions and emergency department visits at Florida Hospital Celebration Health. These reasons are as follows:

Top ten reasons for **emergency department** visits at Florida Hospital Celebration Health

1. Abdominal Pain	2. Chest Pain	3. Fever	4. Nausea and Vomiting	5. Open wound of the head
6. Disorder of the Back	7. Cellulitis	8. Disorder of the Urethra	9. Acute Pharyngitis	10. Sprains and Strains of the Back

Top ten reasons for **inpatient admissions** at Florida Hospital Celebration Health:

1. Prostate Cancer	2. Obesity	3. Osteoarthritis	4. Perineal or Vulval trauma during delivery	5. Other Pneumonia
6. Pelvic organ abnormality	7. Gallstones	8. Labor-related intervention	9. Cellulitis	10. Abdominal Pain

Secondary data, as opposed to primary data, are information that have been collected and compiled by someone other than the user. For the purpose of this assessment, secondary data were collected and compiled by the agencies listed in the previous section, such as the U.S. Census Bureau, and was accessed and compiled by the Health Council of East Central Florida and Florida Hospital and Orlando Health Community Benefit staff members.

Secondary data were gathered using the Healthy Measures for East Central Florida online Health Community Network (HCN) tool. This customizable web-based community dashboard, designed by Healthy Communities Institute (HCI), delivers access to high-quality data and decision support. The HCN provides health indicator tracking, best practice sharing, and community development to help improve the health and environmental sustainability of Celebration and surrounding communities. This tool was jointly funded by the collaboration and is publicly available to the community as a resource.

As data specific to the city, or Census Designated Place (CDP), are not available for most variables, this CHNA includes county-level indicators for mortality, morbidity, years potential life lost, access to care issues, behavioral risk factors, health screenings, and health conditions. Nevertheless, over 100 indicators were collected and analyzed for this report. Data were provided by race/ethnicity and age when available. Zip code level data were provided for preterm and low birth weight infants. When applicable, Healthy People 2020 targets were included to provide a national benchmark for community health. Grades and recommendations from the U.S. Preventive Services Task Force (USPSTF) to assess the merits of preventive measures, including screening tests and counseling were also included where appropriate. Grades and recommendations are defined in Appendix B on page 150 of the complete Central Florida needs assessment.

Additional data were collected from Florida Community Health Assessment Resource Tool Set (CHARTS) and the Florida Youth Substance Abuse Survey to supplement health status data on Celebration youth.

This tri-county community health needs assessment process included the broad community as well as underserved populations. The assessment highlights health disparities in the region served by the hospital. Indicators for the social determinants of health were also gathered from Healthy Measures and CHARTS. These define the community conditions in which people are born, live, work, and play. A review of these indicators can help identify inequities that can affect health status.

The tri-county data, the hospital utilization data and stakeholder interviews were reviewed and analyzed by the campus committees and the CHNAC. The CHNAC reviewed and approved the top 12 health issues identified in the tri-county assessment and the Florida Hospital Celebration Health HHNAC narrowed those issues down to two. The CHNAC and the Florida Hospital Board approved these recommendations.

Asset Inventory

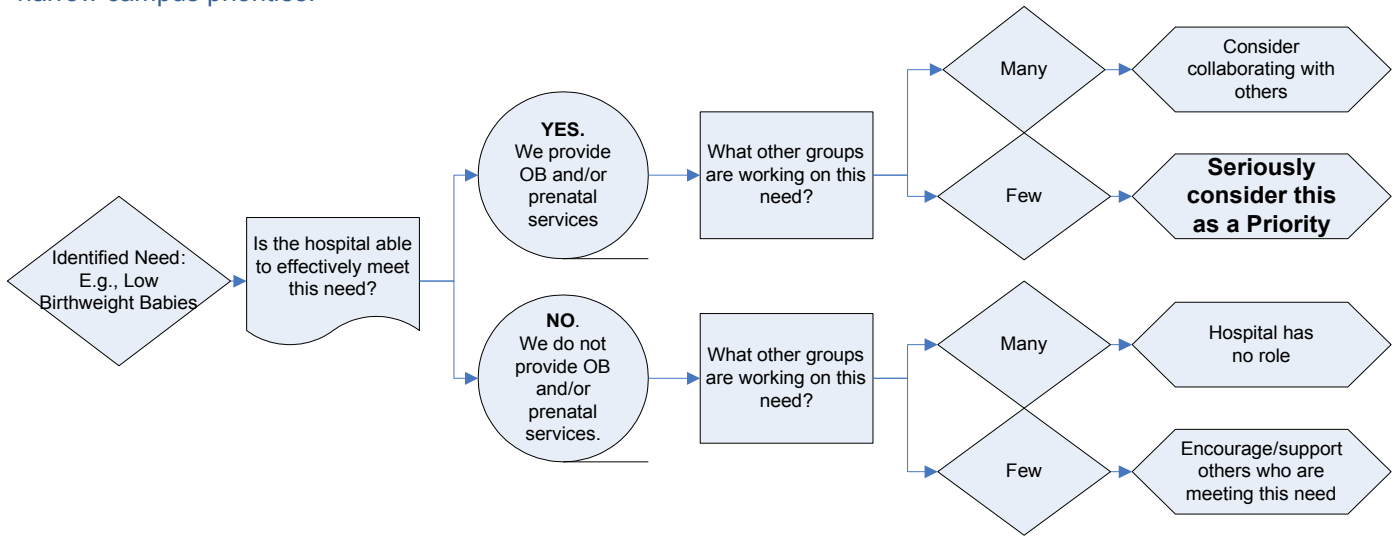
Step one in the process to completing the prioritization of community needs was an asset inventory for the Florida Hospital Celebration Health primary service area and surrounding zip codes. This asset inventory includes services and programs provided in the community – many are provided by community organizations dedicated to improving the health and wellness of the Celebration community, including low-income, minority and other underserved populations. A list of assets in the community was provided to the Community Health Needs Assessment Committee.

A complete list of these assets is included in Appendix E, beginning on page 159, of the tri-county needs assessment; an example of this list is found in the table below:

Chronic Disease		
Asthma	Cancer	Diabetes
<ul style="list-style-type: none"> Hispanic Health Initiatives Center for Multicultural Wellness and Prevention Community Health Centers Grace Medical Home Health Care Center for the Homeless American Lung Association 	<ul style="list-style-type: none"> 100 Black Men of Orlando, Inc. Central Florida Black Nurses Association of Florida Debbie Turner Cancer Resource Center Center for Change Center for Multicultural Wellness and Prevention American Cancer Society 	<ul style="list-style-type: none"> American Diabetes Association Center for Change Center for Multicultural Wellness and Prevention Central Florida Family Health Centers Central Florida Partnership on Health Disparities Central Florida YMCA

Priority-setting Process

In order to move from assets to priorities, the CHNAC and HHNAC used decision trees to review each aggregated priority identified for the county. This priority selection process took into account primary and secondary data as well as hospital and community assets. The figure below is an example of the decision tree that was used to narrow campus priorities.



Data Summary

The data collection process described in the previous pages yielded 14 areas of concern in Osceola County, Florida. They are:

1. Heart Disease
2. Obesity
3. Cancer
4. Diabetes
5. Asthma
6. Maternal and Child Health
7. Mental Health
8. Substance Abuse
9. Dental Care
10. Affordable Health Care
11. Housing Affordability
12. Homelessness
13. High Unemployment
14. Single Parent Households

A full review and explanation can be found in section 14 of the tri-county assessment.

The Hospital Health Needs Assessment Committee (HHNAC) recognized that while all 14 issues impact the health of Celebration residents and the surrounding communities, it is important to focus on specific areas of impact over a defined period of time if sustainable change is to be accomplished. It is also important that the hospital be equipped to address these issues, that programs are not duplicative, and that there is opportunity for community partnerships to address the issues. As such, the HHNAC selected obesity and chronic disease management as the key priorities for Florida Hospital Celebration.

The rationale is as follows. Three county-wide priorities identified based on hospital utilization, incidence, prevalence, and death rates were **heart disease, cancer, and asthma**. Obesity is a contributing factor to these three chronic diseases, thus a reduction in obesity should contribute to a reduction in complications due to these chronic diseases; obesity interventions also have the potential to delay or eradicate the onset of diabetes, heart disease, asthma, or cancer. Diabetes, heart disease, and now obesity are three of the most common chronic conditions in the United States as a whole. All three have very similar risk factors and are often poorly controlled; cancer is the leading cause of death in the county and is now ranked among the most common chronic conditions as well. Asthma is among the leading causes of illness in Osceola County teens and pre-teens. Heart disease has long been a leading cause of emergency room visits, hospital admissions, and surgical interventions in Central Florida and the country as a whole. Chronic disease self management focuses health education efforts on exercise, nutrition, and personal accountability; these three processes are vital to the control of diabetes, heart disease, cancer, asthma and the various comorbidities that often accompany these diseases – including obesity. For these reasons, we believe that Florida Hospital Celebration Health has the appropriate resources to address heart disease, cancer, asthma, and their risk factors while specifically addressing obesity and diabetes. Additionally, Florida Hospital Celebration Health is dedicated to developing partnerships with social justice organization that are dedicated to reducing social causes and consequences of cancer and asthma.

Florida Hospital Celebration Health does not have service lines for **dental care, substance abuse, or mental health**. However, we will continue to work with the Florida Department of Health in Osceola County, faith-based organizations (FBOs), community-based organizations (CBOs), and other not-for-profit systems to promote healthy families, and we will also continue to seek opportunities for innovative collaborations for the betterment of our community. Additionally, the Florida Hospital Community Health Impact Council board has already and will continue to evaluate funding mechanisms for innovative and best practice programs centered on addressing mental health, substance abuse, dental health and other issues in the community. The same holds true for the priority of **maternal and child health**. Additionally, Florida Hospital Community Impact staff are actively engaged in maternal and child health initiatives in Osceola County. Florida Hospital campuses with an obstetrics service line, including Celebration Health, also work with parents to ensure that children have safe, appropriate car seats.

The community issues of **housing affordability, homelessness, high unemployment, and single parent households** are not core competencies of Florida Hospital Celebration. However, we will continue to support the efforts of local law enforcement agencies, organizations like Harbor House of Central Florida, and other CBOs and FBOs that are committed to community mobilization, education, and support services. Florida Hospital is also

working with Healthy Central Florida on a pilot program aimed at safe walking and biking practices in other communities and as successful initiatives are identified, they will be evaluated by the Florida Hospital CHNAC. Florida Hospital Community Health Impact also has community partnerships in an effort to impact social determinants of health.

The last community concern that has been identified is **affordable healthcare**. Although this issue has not been specifically prioritized to be addressed by the Celebration Health campus, Florida Hospital is an active supporter of health care for the uninsured in Osceola County. We were among the founders of the four-facility network of Federally Qualified Health Centers in the county, financially support the Council on Aging Chronic Care Medical Clinic for uninsured people, fund a diabetes programs targeting uninsured people, fund a Secondary Care referral service, and are leaders in a new homeless center that has a medical clinic. Further, the principle of affordable healthcare is embedded into our multiple Florida Hospital programs and efforts as we seek to educate our community on health resources and offer care at a reduced cost or no cost where possible. We also aim to strengthen the relationship with organizations that offer primary care, dental, and obstetric services. Florida Hospital is also working internally to ensure comprehensive discharge education.

Priority Selection

A comprehensive analysis of health indicators provides an increased understanding of the community’s health problems. Prioritizing health issues ensures that resources allocated to address community health needs are used effectively and efficiently in an effort to achieve optimal outcomes. To accomplish the task of prioritizing health needs, the Assessment Protocol for Excellence in Public Health (APEXPH) modified Hanlon Method was used to categorize and rank health indicators to identify key needs in the tri-county area. This method considered three criteria: the magnitude of the problem, as measured in terms of the percent of the population with the health problem; the severity of the problem in terms of mortality, morbidity, hospitalizations, economic loss or community impact; and the predicted effectiveness of the intervention in preventing the health problem.

In addition to the above-mentioned criteria, health indicator rates were compared to national benchmark targets (where available) to define the gap between the current and potential health of the community. Indicator rates were also trended to highlight improvement or decline from the previous time measurement. Finally, a six-step process was utilized to solidify priorities in each county and each step is described in detail in the complete assessments located on the Orlando Health and Florida Hospital websites. The top 14 indicators identified by the assessment for Osceola County are described in Table I.

Table I. Priorities

Osceola County		
1. Heart Disease	5. Asthma	10. Affordable Healthcare
2. Obesity	6. Maternal and Child Health	11. Housing Affordability
3. Cancer	7. Mental Health	12. Homelessness
4. Diabetes	8. Substance Abuse	13. High Unemployment
	9. Dental Care	14. Single Parent Households

While the above-mentioned 14 needs were identified for the broader Osceola County community, Florida Hospital Celebration chose to prioritize needs based on the hospital's ability to meet those needs in this 3-year assessment period. As previously mentioned, upon completion of asset inventory, a decision tree process was utilized to a) identify the highest needs, b) evaluate whether or not there were existing resources to meet this need, and c) rank our ability as a hospital organization to create partnerships or continue collaborations to address this need.

As a result of the efforts of the Celebration campus Community Health Needs Assessment Committee, the following two areas were selected as priorities for the 2013 needs assessment year:

1. Obesity – There is scientific evidence indicating that obesity is linked to metabolic disorders and other chronic diseases. As such, efforts to reduce, control, and prevent obesity have great potential to positively impact other chronic conditions and lifestyle factors that have been prioritized.
2. Diabetes – Heart disease, diabetic retinopathy, kidney disease, nerve damage, and gum disease are just a few of the health complications due to diabetes. Diabetes was also the fourth leading cause of hospital admissions on the Kissimmee campus in 2012; many Celebration Health patients live in the Kissimmee service area. As such, an intervention aimed at reducing the incidence and decreasing the prevalence of diabetes has the potential to positively impact the entire community.

Next Steps

The CHNAC and Community Impact staff will work with community organizations, agencies, and medical staff to create a Community Health Plan (Implementation Strategy) that will build capacity for obesity and chronic disease management through partnership enhancement in Celebration and the surrounding Osceola County community.

The Florida Hospital Celebration Health campus HHNAC will develop the Community Health Plan with measurable outcome goals; it will be published by May 15, 2014 at which time implementation and scheduled evaluation will begin. We will measure the efficacy and effectiveness of our plans throughout the intervention process to determine if we have been successful in reducing obesity, improving the management of chronic diseases, and enhancing the quality of life of all Celebration residents – regardless of the income levels and ethnic backgrounds.



OSCEOLA HEALTH LEADERSHIP COUNCIL COLLABORATION ROSTER

Representing the needs of and serving the interests of: Orange, Osceola, and Seminole Counties

Year: 2013

Community Benefit Manager: Verbelee Nielsen-Swanson

Name		Organization
1	Donna Sines	Community Vision
2	Dorie Croissant	Florida Hospital
3	Amanda Kraft	Osceola County Public Schools
4	Angel Walbero	Nemours Children's Hospital
5	Anna Baznik	Intervention Services
6	Barbara Meeks	Nemours Children's Hospital
7	Belinda Johnson-Cornett	Florida Department of Health - Osceola County
8	Beverly Hougland	Osceola Council on Aging
9	Cathryn Dececco	Blue Cross/Blue Shield Florida
10	Celestia McCloud	Osceola County Government
11	Jim Shanks	Park Place Behavioral Healthcare
12	Joanna Conley	Osceola Regional Hospital
13	John Quinones	Osceola County Government
14	Josephine Mercado	Hispanic Health Initiatives
15	Karen Beary	Catholic Charities
16	Ken Peach	Health Council of East Central Florida
17	Lisa Barkley	UCF College of Medicine
18	Mariobyn Jones	Health Management Associates

19	Natalia Cabrero	Florida Hospital
20	Niki Whisler	Osceola County Government
21	Robert Brooks	Health Management Associates
22	Robert Sorenson	Osceola County Government
23	Robert Krieger	Osceola Regional Hospital
24	Tom Griffin	The Transition House
25	Kerrian Linville	Healthy Start
26	Patty McWhirter	Healthy Start
27	Lisa Houpt	Healthy Start
28	Gwendolyn Winkfield	Florida Department of Health – Osceola County
29	Linda Clark	Florida Department of Health – Osceola County
30	Sue Ring	Community Vision

2013 Florida Hospital

Community Health Needs Assessment Committee (CHNAC) Roster

Note: The Community Health Needs Assessment Committee (CHNAC) also serves as the Community Health Impact Council (CHiC), the community benefit subcommittee of the Florida Hospital Board. The Committee meets quarterly.

Name	Entity/Agency Represented	Title	Expertise
Lars Houmann	Florida Hospital	President & CEO CHNAC Chairman	Chairs the Committee. Active in community and economic development.
Brian Paradis	Florida Hospital	COO	Board member for Frontline Outreach (for African American children) and Grace Medical Home (uninsured patients with chronic diseases)
Eddie Soler	Florida Hospital	CFO	Member, Central Florida Hispanic Chamber of Commerce
Sy Saliba	Florida Hospital	SVP, Community Impact	Oversees community benefit and community relations
Verbelee Nielsen-Swanson	Florida Hospital	VP, Community Impact	Community Benefit VP and Needs Assessment author. Leads FH effort in the Bithlo Transformation Effort (healthy community effort for very low income community)
Sheryl Dodds	Florida Hospital	SVP/CNO	Nursing for patients of all income levels and ethnicities
Ed Hodge	Florida Hospital	SVP, Human Resources & Diversity	Leads FH's Diversity & Inclusion department. Keenly aware of issues around health disparities.
Rich Morrison	Florida Hospital	SVP, Government & Public Policy	Health policy expert. Co-founder of community initiatives including Jail Oversight Commission, Human Trafficking Task Force, Central Receiving Center (police/community mental health agency), Early Childhood Coalition
Ross Edmundson, MD	Florida Hospital	VP, Case Management	Discharge planning for all patients including the elderly, uninsured, low-income and minority patients
Antonia Novello, MD	Florida Hospital	Director, Public Health Policy	Former US Surgeon General (first woman and first Hispanic). Strong Public Health experience and expertise.
Roniece Weaver	Hebni Nutrition Consultants	President	Nutritionist who works in African American community. Author of the <i>Healthy Soul Food Pyramid</i> .
Linda Ewing	Massey Services	Senior Leader	Community leader. Massey supports many community entities including those serving low-income and minority populations.
John Crossman	Crossman & Co.	Principal	Strongly involved in faith-based organizations that do community outreach
Clem Bezold	Center for Alternative Futures	President & CEO	Health futurist. One current project is Disparity Reducing Alternatives, which bring health technology to low-income and underserved people.

Name	Entity/Agency Represented	Title	Expertise
Ralph Carauna	UCF School of Medicine	Dean	UCF Medical School is in its third year of offering primary care physician training.
Shawn Bartlett	WFTV Ch. 9	General Manager	Heads ABC television news outlet
Jim Jardon	JHT, Inc.	Founder	Former Hispanic Chamber president, Board member for Economic Development Commission, Florida Hospital, and Sanford Burnham Medical Research Institute.
Dick Batchelor	DBM, Inc.	Principal	Political consultant and well-known children's advocate
Debbie Watson	Winter Park Health Foundation	VP	WPHF develops and funds school health and older adult programs. Founder of Healthy Central Florida. Chair of Orange Co. School Wellness Committee.
Steve Homan	Florida Citrus Sports	VP	Leader in healthy community project in the Parramore area (low-income, mainly African American community)
Barbara Jenkins	Orange County Schools	Superintendent	Services children of all ages and ethnicities, including those who are homeless and/or eligible for free/reduced lunch program
Chris Gent	Kissimmee Utilities Authority	VP	Longtime community volunteer. Services on boards including Community Vision (community capacity building). Council on Aging, etc. that serve low-income and Hispanic clients.
Tom Warlow	Gracia Andersen Foundation	President	Community foundation that funds social service projects
Sabine Patel	Forest Lake Church	Youth Pastor	Works with children of all incomes and ethnicities. Expert in wellness, prevention and health promotion.
Maureen Kersmarki	Adventist Health System (parent organization)	Community Benefit Director	Oversees community benefit/CHNAs for 44 hospitals. Chairs Orange County Primary Care Access Network (PCAN) that cares for 100,000 uninsured people.

2013 Florida Hospital Hospital Health Needs Assessment Committee (HHNAC) Roster

	Name	Position	Expertise
1	Ademola Adewale, MD	Physician	
2	Atalie Ashley	Community Impact Project Manager- Florida Hospital	Public Health and Community Benefit
3	Dick Batchelor	President DBMG (political consulting)	Community Advocate, especially for children. Understanding of community needs of low-income and minority populations.
4	Richard Brannon	Financial Planning – Florida Hospital	Financial Analysis
5	Laura Guitar	Edelman – Senior Vice President	Community Advocate
6	Rob Herzog	Admin Director – Florida Hospital	Behavioral Health. Has established mental health programs for uninsured residents.
7	Penny Jones	Executive Director, Community Relations – Florida Hospital	Community Relations / Partnerships. Expert in foster care issues.
8	Lauren Josephs	Executive VP & CEO – Visionary Vanguard Group	Diversity and Disparities Consulting
9	Maureen Kersmarki	Community Benefit Director – Adventist Health System	CHNA oversight for 44 AHS hospitals. Community health and health access leadership. Understands needs of low-income and minority populations.
10	Linda Moffa	Foundation	Grant development for Florida Hospital facilities in the tri-county area. Understanding of community needs of low-income and minority populations.
11	Verbelee Nielsen-Swanson	Vice President, Community Impact – Florida Hospital	Community Benefit, CHIC. Understanding of needs of low-income and minority populations.
12	Sam Olenick	Executive Director Community Partnerships – Florida Hospital	Media, Partnerships. Community Development for tri-county area including Osceola County.
13	Ross Edmundson, MD	Physician, VP for Case Management	Oversees discharge planning for Florida Hospital. Background in disease management. Understanding of needs of low-income and minority populations.
14	Sy Saliba	Senior Vice President	Strategic Planning

Name		Position	Expertise
15	Jill Slaff	Manager Community Health Impact – Florida Hospital	Community Health and Wellness. Understanding of needs of low-income and minority populations.
16	Jordan Williams	Market & Planning	Data