



FLORIDA HOSPITAL  
AT CONNERTON  
*Long Term Acute Care*

# Florida Hospital at Connerton Long-Term Acute Care 2014-2015 Community Health Needs Assessment

---



## 1. EXECUTIVE SUMMARY

Florida Hospital Connerton LTAC is located in Land O' Lakes in Pasco County, Florida. Connerton LTAC is a long-term care hospital to which patients are referred from 25 other facilities in Florida.

Florida Hospital at Connerton Long-Term Acute Care conducted this Community Health Needs Assessment in 2014. The goals of the assessment are to:

- Assess the community's health needs and interests
- Engage community stakeholders to participate in the Needs Assessment process
- Identify resources and collaborate with community partners including Public Health
- Publish this Community Health Needs Assessment
- Develop and implement a Community Health Plan based on the Hospital's prioritized needs

This Assessment was based on primary data from stakeholder interviews and other input. Secondary data came from local, regional and national health-related data sources. Florida Hospital Connerton LTAC made a particular effort to define the needs of low-income, minority and underserved populations in our service area. We did this through the members of our Community Health Needs Assessment who represented low-income, minority and other vulnerable populations) and through Stakeholder Interviews with community members.

Connerton LTAC's primary service area (from which 80% of its patients come) consists of Hillsborough and Pasco Counties. Because of our unique patient mix, we are also giving special consideration to people over 65 and to the south central area of Pasco County where Connerton LTAC is located.

The Community Health Needs Assessment identified the top needs in our primary service area:

1. Access to health care (primary care, dental services)
2. Cancer
3. Chronic diseases (respiratory conditions, diabetes, heart disease, hypertension)
4. Family/Employee Caregiver burnout and compassion fatigue)
5. Heart disease and stroke
6. Infant death & low birth weight babies
7. Lifestyle Challenges (smoking, obesity, nutrition)
8. Mental health and substance abuse (suicide, alcohol)
9. Smoking
10. Transportation (general, LTAC)

Based on the acuity of the needs and the ability of the hospital to influence them, Florida Hospital at Connerton LTAC will address the following needs:

- 1. Family/caregiver burnout and compassion fatigue**
- 2. Community support and referrals for chronic disease – diabetes**
- 3. Community support and referrals for chronic disease – respiratory/asthma**
- 4. Transportation for LTAC families**

# Table of Contents

.....	1
1. EXECUTIVE SUMMARY.....	2
2. FLORIDA HOSPITAL AT CONNERTON LONG-TERM ACUTE CARE.....	5
Adventist Health System .....	5
CHOOSING THE COMMUNITY .....	6
The Florida Hospital Connerton LTAC Community.....	6
3. DESCRIPTION OF THE COMMUNITY SERVED.....	7
4.A. Demographics: Pasco County .....	7
Demographics: Cities in Pasco County .....	8
Demographics: Trilby, Aripeka & Lacochee.....	11
4.B. Demographics: Hillsborough County .....	13
Zip Codes: Hillsborough County .....	13
Demographics: Hillsborough County.....	13
Demographics: Suburbs and Cities in Hillsborough County .....	14
4. COMMUNITY HEALTH NEEDS ASSESSMENT COMMITTEE (CHNAC) .....	19
5. STAKEHOLDER INPUT PROCESS.....	20
Stakeholder Interview Questions .....	20
6. PUBLIC HEALTH.....	21
7. DATA SOURCES.....	21
Primary Data.....	21
Secondary Data .....	21
8. DATA FINDINGS & ANALYSIS .....	22
9.A. Primary Data: Findings from Hospital Utilization Data.....	22
LTAC Patient Origins .....	22
LTAC Reasons for Admissions.....	23
LTAC Gender and Ethnicity .....	23
LTAC Age.....	23
9.B. Primary Data: Findings from Stakeholder Interviews.....	24
9.C. Secondary Data: U.S. Census Data.....	25
9.D. Primary & Secondary Data: Healthy Tampa Bay .....	25
9.E. Secondary Data: Pasco County Department of Health 2010/2011 Community Health Profile .....	27

9.F. Secondary Data: Hillsborough County Department of Health 2010/2011 Community Health Profile ..... 27

9.G. Primary & Secondary Data: Findings from other Florida Hospital facilities in Tampa Bay ..... 28

9. DATA SUMMARY ..... 28

10.A. Preliminary Data – High-level Findings re Top Health Issues ..... 29

10.B. Aggregated Service Area Priorities based on the Issues listed above ..... 31

10.C. Asset Inventory..... 34

10. PRIORITY SELECTION ..... 36

11.A. Decision Tree..... 36

11.B. Priorities determined by the Community Health Needs Assessment Committee..... 37

11. COMMUNITY HEALTH PRIORITIES FOR CONNERTON LTAC ..... 38

12. CONNERTON LTAC COMMUNITY HEALTH PLAN ..... 38

## 2. FLORIDA HOSPITAL AT CONNERTON LONG-TERM ACUTE CARE

Florida Hospital at Connerton Long Term Acute Care became part of Adventist Health System in August 2010. At that time, Adventist Health System purchased five Tampa Bay-area hospitals from University Community Hospital (UCH). UCH had built the Connerton LTAC facility in 2009 but had not yet opened it.

Today, Connerton LTAC is a 50-bed long-term care hospital for patients with medically complex conditions that require additional weeks of specialized hospital care. LTAC patients are referred in from 25 different hospitals. Patients come from 52 different counties in and out of Florida.

To be transferred in and admitted to Connerton LTAC, patients must require medically necessary treatments or interventions, a continued acute level of care (following a hospitalization), have a history of failed treatment in a lower level of care, or have a high rate of recidivism.

Internal hospital data for 2013 and 2014 shows:

- Connerton LTAC discharged 668 patients between Q2 2013 and Q1 2014
- The average patient age was 67.9 years old in 2013 and 68.57 years old in 2014
- 81.8% of patients were covered by Medicare in 2014, and 78.7% in 2013
- 66% of patients were Caucasian, 15% were African American, 8% were Hispanic and 11% were Other
- The gender distribution was 50.9% men and 49.1% women in 2014
- The average Length of Stay was 25 days
- Connerton LTAC runs at 95% capacity because there are no other LTACs in the region

Connerton LTAC's trained staff delivers expert care and helps patients progress to the next stage of recovery through:

### **Specialized medical care**

- ✓ Ventilator weaning
- ✓ Complex respiratory conditions
- ✓ Infectious diseases
- ✓ Complex wound care
- ✓ Heart failure
- ✓ Medically complex conditions
- ✓ Neurological disorders
- ✓ Post-trauma care
- ✓ Renal disorders
- ✓ Bariatric care
- ✓ Surgical complications

### **Clinical services**

- ✓ Nursing Units: critical care unit and medical/surgical units
- ✓ Imaging: X-ray or ultrasound scans
- ✓ Surgical Suite: minor inpatient procedures
- ✓ Laboratory: dedicated on-site laboratory
- ✓ Pharmacy: inpatient Pharmacy for drugs ordered by a patient's physician
- ✓ Respiratory: Level 5 therapy with expertise in critical care ventilator support, ventilator weaning and acute respiratory therapy
- ✓ Therapy Services: physical, occupational, speech and nutritional therapy
- ✓ Case Management: Insurance, discharge planning and special service needs such as home health care or medical equipment

In addition, the Connerton LTAC Chaplain meets the spiritual needs of the patients and staff.

## **Adventist Health System Mission**

Adventist Health System (AHS) is part of the Seventh-day Adventist Church's world-wide network of health care facilities. AHS is comprised of 45 hospital campuses and is a national leader in quality, safety and patient satisfaction.

Although separated by geography, each of our facilities is united by the mission of *Extending the Healing Ministry of Christ*. Our values include Christian Mission, Community Wellness, Quality and Service Excellence, Ethical Standards, Compassion and Cultural Diversity. We practice the tradition of whole-person care in all that we do.

## CHOOSING THE COMMUNITY

Florida Hospital Connerton LTAC is located in the south central part of Pasco County, FL, a bedroom community to the greater Tampa Bay area. Patients are referred to Connerton LTAC by 25 other hospitals in Florida. Florida Hospital also operates community hospitals in Tampa, Carrollwood, Wesley Chapel and Zephyrhills.

The map shows most of the counties in "Central Florida" from which Connerton LTAC patients are referred. Central Florida is divided into several regions:

- Greater Tampa Bay (pink)
- Southwest (blue)
- Greater Orlando area (green)
- Southeast (orange)
- North Central Florida (purple) is also included on this map, but no Connerton LTAC patients came from these counties.

Connerton LTAC defines its Primary Service Area (PSA) as the area in which 80% of its patients live. In 2013-14, 81.6% of Connerton LTAC patients lived in two counties.

- 46.3% of patients lived in Hillsborough County
- 35.3% of patients lived Pasco County

Another 5.2% lived in Hernando County, and 4.9% lived in Polk County. The remaining patients (8.3%) lived in 48 other counties, mostly in Florida.



## The Florida Hospital Connerton LTAC Community

For the purposes of this Community Health Needs Assessment, we used three criteria to define the Connerton LTAC "community":

1. The **Primary Service Area** (PSA) from which at least 80% of our patients come (Hillsborough and Pasco Counties)
2. Our **facility location** in the south central part of Pasco County (Land O' Lakes area), including the eight zip codes closest to the facility (Lacoochee-33537, Zephyrhills-33539, 33540, 33541, 33543 and 33544, Spring Hill-34610 and Land O' Lakes-34639)
3. **People over 65** (the Connerton LTAC average patient age is 68 years)

### 3. DESCRIPTION OF THE COMMUNITY SERVED

This section of the Florida Hospital at Connerton LTAC Community Health Needs Assessment describes the two counties in the Primary Service Area as well as a number of cities within the counties. All data is based on 2010 U.S. Census data.

#### 4.A. Demographics: Pasco County

Pasco County is located in west central Florida directly north of Hillsborough County (home of the city of Tampa). It is considered a rural county but has larger cities of its far left side. Dade City is the county seat.



As of the 2010 census, Pasco County had 464,697 residents in the following zip codes:

33523 Dade City	<b>33539 Zephyrhills</b>	<b>34639 Land O' Lakes</b>	34667 Hudson
33524 Crystal Springs	<b>33540 Zephyrhills</b>	34652 New Port Richey	34668 Port Richey
33525 Dade City	<b>33541 Zephyrhills</b>	34653 New Port Richey	34674 Hudson
33526 Dade City	<b>33543 Zephyrhills</b>	34654 New Port Richey	34679 Arippeka
<b>33533 Wesley Chapel</b>	<b>33544 Zephyrhills</b>	34655 New Port Richey	34690 Holiday
<b>33534 Wesley Chapel</b>	33574 Saint Leo	34556 New Port Richey	34691 Holiday
33537 Lacochee	34610 Spring Hill		

**Boldface** indicates zip codes in closest proximity to Connerton LTAC

78.2% of the Pasco County population is White, 5.3% is Black, 13% is Hispanic, and 2.3% is Asian.

Slightly more than 103,000 people – 22.2% of residents – are ages 65 or older (the state average is 17.3%). Another 20.6% are under age 18 (the same as the state average). Overall, residents are 51.4% and 48.6% are male. Pasco County has large numbers of winter residents, of “snowbirds.”

86.9% of Pasco residents have at least a high school diploma, but just 20% have a Bachelor’s degree or higher. The median household income is \$43,787. 13.7% of residents of Pasco County residents have incomes below the poverty level compared to 15.6% for the state of Florida.

Land O’Lakes is the home of Florida Hospital Connerton LTAC. Wesley Chapel and Zephyrhills are the two closest cities; both have Florida Hospital facilities. Pasco’s county seat is Dade City, and its largest city is New Port Richey.

The sources for the demographics of the counties and cities in the Connerton LTAC “community” (next page) were 2010 U.S. Census data and 2013 “How Healthy is Tampa Bay?” report.

**NOTE:** In the Ethnicity section of the charts that follow, the numbers do not add up to 100%.

1. The percentages of “Other” ethnicities are not included because they are extremely small.
2. Some people report as both White and Hispanic. To be conservative, we are using the percentages for “White alone.”

## Demographics: Cities in Pasco County

**Land O'Lakes** is comprised of young families with higher income and education levels than other parts of the county.  
*Florida Hospital at Connerton is a Long-Term Acute Care facility with 50 beds.*

	<b>Land O' Lakes</b>	<b>FL</b>
Residents	31,996	19.5m
Ethnicity	75.2% white 5.0% black 15.2% Hispanic 2.9% Asian	57.9% white 16.0% black 15.2% Hispanic 2.7% Asian
Female persons	50.4%	51.1%
% of residents over 65	11.4%	17.3%
% of residents under 18	24.7%	21.3%
High school education	91.5%	85.8%
Bachelor's degree or higher	33.3%	26.2%
Median Household income	\$66,985	\$47,309
Persons below poverty level	5.6%	15.6%

**Wesley Chapel** is a younger, diverse and affluent community that has larger percentages of Asian and Hispanic residents.  
*Florida Hospital Wesley Chapel is a community hospital with 83 beds.*

	<b>Wesley Chapel</b>	<b>FL</b>
Residents	44,092	19.5m
Ethnicity	60.6% white 11.4% black 20.1% Hispanic 5.7% Asian	57.9% white 16.0% black 15.2% Hispanic 2.7% Asian
<b>Female person</b>	51.6%	51.1%
% of residents over 65	8.9%	17.3%
% of residents under 18	28.3%	21.3%
High school education	94.7%	85.8%
Bachelor's degree or higher	35.2%	26.2%
Median Household income	\$73,832	\$47,309
Persons below poverty level	7.7%	15.6%

**Zephyrhills** is an older community that is less diverse than some other parts of Pasco County.  
*It is home to Florida Hospital Zephyrhills, a community hospital with 139 beds.*

	<b>Zephyrhills</b>	<b>FL</b>
Residents	13,288	19.5m
Ethnicity	82.3% white 4.9% black 10.4% Hispanic 1.4% Asian	57.9% white 16.0% black 15.2% Hispanic 2.7% Asian
Female persons	53.7%	51.1%
% of residents over 65	28.5%	17.3%
% of residents under 18	18.7%	21.3%
High school education	81.8%	85.8%
Bachelor's degree or higher	13.5%	26.2%
Median Household income	\$36,343	\$47,309
Persons below poverty level	15.1%	15.6%



**San Antonio** is a very small community near Connerton LTAC in eastern Pasco County. Its residents are primarily white.

	<b>San Antonio</b>	<b>FL</b>
Residents	1,138	19.5m
Ethnicity	96.5% White 1% Black 6% Hispanic .44% Asian	57.9% white 16.0% black 15.2% Hispanic 2.7% Asian
Female persons	51.1%	51.1%
% of residents over 65	9.75%	17.3%
% of residents under 18	24.6%	21.3%
High school education	N/A	85.8%
Bachelor's degree or higher	N/A	26.2%
Median Household income	\$43,125	\$47,309
Persons below poverty level	10.1%	15.6%

**St. Leo** is another very small town in eastern Pasco County. It is home to Saint Leo University; the average age is 20 years old.

	<b>St. Leo</b>	<b>FL</b>
Residents	1,340	19.5m
Ethnicity	77.0% white 14.6% black 12.2% Hispanic 1.79% Asian	57.9% white 16.0% black 15.2% Hispanic 2.7% Asian
Female persons	51.6%	51.1%
% of residents over 65	6.3%	17.3%
% of residents under 18	3.8%	21.3%
High school education	N/A	85.8%
Bachelor's degree or higher	N/A	26.2%
Median Household income	\$37,917	\$47,309
Persons below poverty level	19.9%	15.6%

**Dade City** is more diverse and less educated than other parts of the county. A third of residents live below the poverty level.

	<b>Dade City</b>	<b>FL</b>
Residents	6,590	19.5m
Ethnicity	57.2% white 20.4% black 20.6% Hispanic .4% Asian	57.9% white 16.0% black 15.2% Hispanic 2.7% Asian
Female persons	54.5%	51.1%
% of residents over 65	17.5%	17.3%
% of residents under 18	24.5%	21.3%
High school education	75.3%	85.8%
Bachelor's degree or higher	15.9%	26.2%
Median Household income	\$28,605	\$47,309
Persons below poverty level	33.1%	15.6%

**New Port Richey** is larger, older, lower income and less ethnically diverse than some other cities in the county.

	<b>New Port Richey</b>	<b>FL</b>
Residents	15,087	19.5m
Ethnicity	82.4% white 3.0% black 11.2% Hispanic 1.4% Asian	57.9% white 16.0% black 15.2% Hispanic 2.7% Asian
Female persons	51.9%	51.1%
% of residents over 65	23.9%	17.3%
% of residents under 18	17.9%	21.3%
High school education	84.2%	85.8%
Bachelor's degree or higher	10.0%	26.2%
Median Household income	\$28,763	\$47,309
Persons below poverty level	23.4%	15.6%

**Hudson** is also older, lower income and less ethnically diverse than some other cities in the county.

	<b>Hudson</b>	<b>FL</b>
Residents	12,158	19.5m
Ethnicity	91.6% White 0.7% Black 5.0% Hispanic 1.2% Asian	57.9% white 16.0% black 15.2% Hispanic 2.7% Asian
Female persons	51.1%	51.1%
% of residents over 65	34.8%	17.3%
% of residents under 18	12.9%	21.3%
High school education	85.3%	85.8%
Bachelor's degree or higher	15.4%	26.2%
Median Household income	\$34,717	\$47,309
Persons below poverty level	17.3%	15.6%

**Holiday** is larger, older and less ethnically diverse than some other cities in the county.

	<b>Holiday</b>	<b>FL</b>
Residents	22,403	19.5m
Ethnicity	82.7% White 4.1% Black 10.0% Hispanic 1.4% Asian	57.9% white 16.0% black 15.2% Hispanic 2.7% Asian
Female persons	51.4%	51.1%
% of residents over 65	21.2%	17.3%
% of residents under 18	20.0%	21.3%
High school education	81.6%	85.8%
Bachelor's degree or higher	10.5%	26.2%
Median Household income	\$35,234	\$47,309
Persons below poverty level	17.4%	15.6%

**Bayonet Point** has a large population of retired people. Its median income level falls well below the state average.

	<b>Bayonet Point</b>	<b>FL</b>
Residents	23,467	19.5m
Ethnicity	86.2% White 1.9% Black 9.0% Hispanic 1.2% Asian	57.9% white 16.0% black 15.2% Hispanic 2.7% Asian
Female persons	53.0%	51.1%
% of residents over 65	30.6%	17.3%
% of residents under 18	18.4%	21.3%
High school education	87.0%	85.8%
Bachelor's degree or higher	10.9%	26.2%
Median Household income	\$29,816	\$47,309
Persons below poverty level	16.7%	15.6%

**Spring Hill** is a large, younger community that straddles Hernando and Pasco Counties; most of the population is in Hernando.

	<b>Spring Hill</b>	<b>FL</b>
Residents	98,621	19.5m
Ethnicity	78.5% White 5.1% Black 13.6% Hispanic 1.4% Asian	57.9% white 16.0% black 15.2% Hispanic 2.7% Asian
Female persons	52.5%	51.1%
% of residents over 65	22.2%	17.3%
% of residents under 18	21.6%	21.3%
High school education	86.2%	85.8%
Bachelor's degree or higher	14.4%	26.2%
Median Household income	\$41,568	\$47,309
Persons below poverty level	14.1%	15.6%

### Demographics: Trilby, Aripeka & Lacochee

Trilby, Aripeka and Lacochee are very small, unincorporated communities in eastern Pasco County. They are included in this Assessment because of their geographic proximity to Florida Hospital Connerton LTAC.

**Trilby** is an unincorporated area in northeast Pasco County. It has just over 400 residents, of whom 30% are African American.

	<b>Trilby</b>	<b>FL</b>
Residents	419	19.5m
Ethnicity	62.53% White 30.31% Black 11.46% Hispanic N/A Asian	57.9% white 16.0% black 15.2% Hispanic 2.7% Asian
Female persons	51.55%	51.1%
% of residents over 65	17.66%	17.3%
% of residents under 18	20.77%	21.3%
High school education	N/A	85.8%
Bachelor's degree or higher	N/A	26.2%
Median Household income	N/A	\$47,309
Persons below poverty level	N/A	15.6%

**Aripeka** is a tiny, rural community whose population is 90% Caucasian/White.

	<b>Aripeka</b>	<b>FL</b>
Residents	308	19.5m
Ethnicity	90.58% White 0.32% Black 5.19% Hispanic 0.97% Asian	57.9% white 16.0% black 15.2% Hispanic 2.7% Asian
Female persons	51.62%	51.1%
% of residents over 65	17.86%	17.3%
% of residents under 18	16.56%	21.3%
High school education	N/A	85.8%
Bachelor's degree or higher	N/A	26.2%
Median Household income	N/A	\$47,309
Persons below poverty level	N/A	15.6%

**Lacoochee** is a small, rural and highly diverse community in which half the people have incomes below the poverty level.

	<b>Lacoochee</b>	<b>FL</b>
Residents	1,714	19.5m
Ethnicity	67.91% White 19.37% Black 38.97% Hispanic 0.12% Asian	57.9% white 16.0% black 15.2% Hispanic 2.7% Asian
Female persons	50.76%	51.1%
% of residents over 65	9.10%	17.3%
% of residents under 18	36.81%	21.3%
High school education	N/A	85.8%
Bachelor's degree or higher	N/A	26.2%
Median Household income	\$40,300	\$47,309
Persons below poverty level	51.2%	15.6%

## 4.B. Demographics: Hillsborough County

Hillsborough County is an ethnically diverse county that is home to 1.29 million people. Hillsborough’s county seat is Tampa; the Tampa area has multiple suburbs and a few small cities. Some communities have large numbers of winter residents, or snowbirds.

### Zip Codes: Hillsborough County

The zip codes for Hillsborough County are:



<b>Apollo Beach</b> 33534, 33570, 33572, 33573	<b>Fish Hawk</b> 33547, 33669	<b>Riverview</b> 33503, 33511, 44534, 33569, 33573, 33578, 33579, 33598	<b>Valrico</b> 33527, 33594, 33596
<b>Balm</b> 33503, 33579, 33598	<b>Gibsonton</b> 33534, 33572, 33578		<b>Westchase</b> 33626
<b>Bloomingdale</b> 33511, 33596	<b>Lake Magdalene</b> 33548, 33549, 33612, 33613, 33618	<b>Ruskin</b> 33570, 33572	<b>Wimauma</b> 33598
<b>Brandon</b> 33510, 33511, 33527, 33578, 33584, 33594, 33596, 33619	<b>Lutz</b> 33548, 33549, 33558, 33549, 33558, 33549, 33647	<b>Seffner</b> 33584	<b>Cory Isles, Hunters Green, West Meadows</b> neighborhoods 33592
<b>Carrollwood</b> 33612, 33618, 33624	<b>Mango</b> 33584, 33610	<b>Sun City Center</b> 33570, 33573, 33598	<b>Tampa Other</b> 33602, 33603, 33604, 33605, 33606, 33607, 33609, 33610, 33611, 33612, 33613, 33614, 33615, 33616, 33617, 33618, 33619, 33620, 33621, 33629, 33634, 33635, 33637, 33657, 33647, 33617, 33647, 33598, 33810
<b>Cheval</b> 33548, 33558	<b>Northdale</b> 33548, 33556, 33558, 33618, 33624, 33625	<b>Temple Terrace</b> 33617, 33637	
<b>Citrus Park</b> 33556, 33625	<b>Palm River</b> 33578, 33619	<b>Thonotosassa</b> 33527, 33584, 33592, 33607	
<b>Dover</b> 33527	<b>Pebble Creek</b> 33647		
<b>East Lake-Orient Park</b> 33584, 33610, 33617, 33619, 33636	<b>Progress Village</b> 33578, 33619	<b>Town &amp; Country</b> 33615, 33634, 33635	<b>Hillsborough Other</b> 33527, 33534, 33540, 33547, 33563, 33565, 33566, 33567, 33570, 33572, 33578, 33584, 33592
<b>Egypt Lake-Leto</b> 33614, 33618	<b>Plant City</b> 33563, 33565, 33566, 33567	<b>University</b> 33549, 33559, 33612, 33613, 33647	

### Demographics: Hillsborough County

In the 2010 U.S. Census, Hillsborough County listed 1,291,578 residents.

Hillsborough County is far more diverse than Pasco County. It is 52.0% white, 17.4% black, 26.0% Hispanic, and 3.9% Asian. The Asian population is mostly concentrated in the City of Tampa. 26% of residents say they speak a language other than English at home.

Hillsborough County residents are, on average, younger than Pasco County residents are. About 165,000 people – 12.8% of Hillsborough residents – are 65 or older (the Pasco average is 22.2% and the state average is 17.3%). Another 23.4% are under age 18. Overall, 51.3% of residents are female.

86.4% of residents have at least a high school education, and 29% of people have Bachelor’s degrees or higher. The median household income is \$49,450. 16.5% of people have incomes below the poverty level.

We have included the demographics for the larger suburbs and small cities in Hillsborough County. As in Pasco County, we have noted the areas in which Florida Hospital has facilities.

**NOTE:** As in the Pasco County demographics, the numbers in the Ethnicity section do not add up to 100%.

1. The percentages of “Other” ethnicities are not included because they are extremely small.
2. Some people report as both White and Hispanic. To be conservative, we are using the percentages for “White alone.”

### Demographics: Suburbs and Cities in Hillsborough County

**Tampa** has higher-than-the-state-average minority populations. One-fifth of residents have incomes below the poverty level.

*Florida Hospital Tampa is a community hospital with 381 beds.*

	<b>Tampa</b>	<b>FL</b>
Residents	352,957	19.5m
Ethnicity	46.3% white 26.2% black 23.1% Hispanic 3.4% Asian	57.9% white 16.0% black 15.2% Hispanic 2.7% Asian
Female persons	51.1%	51.1%
% of residents over 65	11.0%	17.3%
% of residents under 18	22.6%	21.3%
High school education	85.5%	85.8%
Bachelor’s degree or higher	32.9%	26.2%
Median Household income	\$43,514	\$47,309
Persons below poverty level	21.1%	15.6%

**Carrollwood** residents are more affluent, but 21.1% of residents in the Egypt Lake/Leto area live below the poverty level.

*Florida Hospital Carrollwood is a community hospital with 120 beds.*

	<b>Carrollwood</b>	<b>FL</b>
Residents	33,365	19.5m
Ethnicity	80.8% white 7.8% black 27.4% Hispanic 3.83% Asian	57.9% white 16.0% black 15.2% Hispanic 2.7% Asian
Female persons	52.6%	51.1%
% of residents over 65	14.2%	17.3%
% of residents under 18	20.7%	21.3%
High school education	N/A	85.8%
Bachelor’s degree or higher	N/A	26.2%
Median Household income	\$50,833	\$47,309
Persons below poverty level	6.4%	15.6%

**Temple Terrace** is slightly younger and more educated; it is home to the University of South Florida and its Medical School.

	<b>Tampa</b>	<b>FL</b>
Residents	25,179	19.5m
Ethnicity	58.3% white 19.5% black 14.7% Hispanic 5.5% Asian	57.9% white 16.0% black 15.2% Hispanic 2.7% Asian
Female persons	52.2%	51.1%
% of residents over 65	12.1%	17.3%
% of residents under 18	20.0%	21.3%
High school education	92.1%	85.8%
Bachelor's degree or higher	39.2%	26.2%
Median Household income	\$48,192	\$47,309
Persons below poverty level	16.2%	15.6%

**Lutz** is a primarily white community that is younger and more affluent than many other parts of the Tampa Bay area.

	<b>Lutz</b>	<b>FL</b>
Residents	19,344	19.5m
Ethnicity	88.8% White 4.8% black 12.8% Hispanic 2.48% Asian	57.9% white 16.0% black 15.2% Hispanic 2.7% Asian
Female persons	50.1%	51.1%
% of residents over 65	12.3%	17.3%
% of residents under 18	22.5%	21.3%
High school education	N/A	85.8%
Bachelor's degree or higher	N/A	26.2%
Median Household income	\$60,278	\$47,309
Persons below poverty level	6.0%	15.6%

**Plant City** has a high Hispanic population and is younger than some other parts of Hillsborough County.

	<b>Plant City</b>	<b>FL</b>
Residents	36,097	19.5m
Ethnicity	53.4% white 15.1% black 28.8% Hispanic 1.4% Asian	57.9% white 16.0% black 15.2% Hispanic 2.7% Asian
Female persons	51.6%	51.1%
% of residents over 65	11.5%	17.3%
% of residents under 18	28.3%	21.3%
High school education	79.7%	85.8%
Bachelor's degree or higher	17.6%	26.2%
Median Household income	\$46,155	\$47,309
Persons below poverty level	18.3%	15.6%

**Dover** is a small, heavily Hispanic community whose median household income is well below the Florida average.  
 (NOTE: It is unclear why the Census data shows that the White and Hispanic percentages are so similar.)

	<b>Dover</b>	<b>FL</b>
Residents	3,702	19.5m
Ethnicity	68.3% white 2.2% black 67.9% Hispanic .24% Asian	57.9% white 16.0% black 15.2% Hispanic 2.7% Asian
Female persons	45.8%	51.1%
% of residents over 65	8.0%	17.3%
% of residents under 18	33.4%	21.3%
High school education	N/A	85.8%
Bachelor's degree or higher	N/A	26.2%
Median Household income	\$31,333	\$47,309
Persons below poverty level	28%	15.6%

**Mango** is small suburb in which the population is younger and has lower incomes levels than the Florida average.

	<b>Mango</b>	<b>FL</b>
Residents	11,313	19.5m
Ethnicity	71.3% white 15.4% black 24.7% Hispanic 1.53% Asian	57.9% white 16.0% black 15.2% Hispanic 2.7% Asian
Female persons	51.7%	51.1%
% of residents over 65	9.5%	17.3%
% of residents under 18	28.0%	21.3%
High school education	N/A	85.8%
Bachelor's degree or higher	N/A	26.2%
Median Household income	\$33,989	\$47,309
Persons below poverty level	12.6%	15.6%

**Brandon** is a fast-growing, fairly young community whose population increased 32.8% from the 2000 to 2010 U. S. Census.

	<b>Brandon</b>	<b>FL</b>
Residents	103,483	19.5m
Ethnicity	72.0% white 16.0% black 21.0% Hispanic 3.46% Asian	57.9% white 16.0% black 15.2% Hispanic 2.7% Asian
Female persons	51.2%	51.1%
% of residents over 65	9.4%	17.3%
% of residents under 18	23.3%	21.3%
High school education	N/A	85.8%
Bachelor's degree or higher	N/A	26.2%
Median Household income	\$51, 639	\$47,309
Persons below poverty level	7.6%	15.6%



**Bloomingdale** is an affluent community that has become more diverse since the 2000 census.

	<b>Bloomingdale</b>	<b>FL</b>
Residents	22,711	19.5m
Ethnicity	84.2% white 8.4% black 11.9% Hispanic 2.48% Asian	57.9% white 16.0% black 15.2% Hispanic 2.7% Asian
Female persons	51.0%	51.1%
% of residents over 65	9.7%	17.3%
% of residents under 18	26.0%	21.3%
High school education	N/A	85.8%
Bachelor's degree or higher	N/A	26.2%
Median Household income	\$73,139	\$47,309
Persons below poverty level	5.1%	15.6%

**Riverview** is a larger Tampa suburb in which 21% of the population is of Hispanic heritage.

	<b>Riverview</b>	<b>FL</b>
Residents	71,050	19.5m
Ethnicity	70.2% white 17.0% black 21.0% Hispanic 3.1% Asian	57.9% white 16.0% black 15.2% Hispanic 2.7% Asian
Female persons	51.9%	51.1%
% of residents over 65	7.73%	17.3%
% of residents under 18	29.1%	21.3%
High school education	N/A	85.8%
Bachelor's degree or higher	N/A	26.2%
Median Household income	\$51,016	\$47,309
Persons below poverty level	6.8%	15.6%

**Gibsonton** also has high percentages of Hispanic and black residents. Its median income is well below the state average.  
(Note: Gibsonton data was not available on the U.S. Census web sites. The data below comes from <http://city-view.com> 2012.)

	<b>Gibsonton</b>	<b>FL</b>
Residents	14,234	19.5m
Ethnicity	72.8% white 27.88% black 27.88% Hispanic 1.78% Asian	57.9% white 16.0% black 15.2% Hispanic 2.7% Asian
Female persons	For every 100 females, there were 105 males	51.1%
% of residents over 65	8.7%	17.3%
% of residents under 18	29.7%	21.3%
High school education	N/A	85.8%
Bachelor's degree or higher	N/A	26.2%
Median Household income	\$34,000	\$47,309
Persons below poverty level	18.3%	15.6%

**Apollo Beach** grew by nearly 75% between 2000 and 2010. Residents are more educated and have higher incomes than in other parts of the Tampa area.

	<b>Apollo Beach</b>	<b>FL</b>
Residents	14,055	19.5m
Ethnicity	77.3% white 5.9% black 12.7% Hispanic 2.5% Asian	57.9% white 16.0% black 15.2% Hispanic 2.7% Asian
Female persons	50.7%	51.1%
% of residents over 65	15.7%	17.3%
% of residents under 18	21.0%	21.3%
High school education	92.1%	85.8%
Bachelor's degree or higher	30.5%	26.2%
Median Household income	\$66,542	\$47,309
Persons below poverty level	6.8%	15.6%

**Ruskin** is younger and has a significantly higher Hispanic population than the state average.

	<b>Ruskin</b>	<b>FL</b>
Residents	17,208	19.5m
Ethnicity	45.8% white 9.1% black 42.9% Hispanic 1.3% Asian	57.9% white 16.0% black 15.2% Hispanic 2.7% Asian
Female persons	49.5%	51.1%
% of residents over 65	9.8%	17.3%
% of residents under 18	30.1%	21.3%
High school education	72.7%	85.8%
Bachelor's degree or higher	18.1%	26.2%
Median Household income	\$49,099	\$47,309
Persons below poverty level	16.0%	15.6%

**Sun City Center** is a retirement community in the south part of the county. Three-quarters of the residents are over age 65, and the community is predominantly white.

	<b>Sun City</b>	<b>FL</b>
Residents	19,258	19.5m
Ethnicity	93.3% white 2.0% black 3.2% Hispanic .9% Asian	57.9% white 16.0% black 15.2% Hispanic 2.7% Asian
Female persons	57.5%	51.1%
% of residents over 65	76.9%	17.3%
% of residents under 18	2.1%	21.3%
High school education	92.6%	85.8%
Bachelor's degree or higher	31.6%	26.2%
Median Household income	\$43,807	\$47,309
Persons below poverty level	6.3%	15.6%

#### 4. COMMUNITY HEALTH NEEDS ASSESSMENT COMMITTEE (CHNAC)

Florida Hospital at Connerton LTAC created a Community Health Needs Assessment Committee (CHNAC) that included community and hospital leaders who represented the broad community as well as low-income, minority, elderly and underserved populations. CHNAC members included patients / families, community members, community caregivers, first responders, public health, experts on aging populations, and health care providers.

The Committee worked on the needs assessment, guided the selection of priority needs, and helped develop Connerton LTAC’s Community Health Needs Plan (implementation strategy) that addresses the top needs identified in the Assessment.

Name	Entity/Agency Represented	Title	Expertise	County
Ms. Debora Martoccio	Connerton LTAC	▪ CEO	▪ Long-term care ▪ Nursing leadership	Pasco
Mr. Michael Napier	Pasco & Marion County Dept. of Health	▪ Director, Pasco ▪ Acting Director, Marion	▪ Public Health ▪ Low-income, minority and underserved	Pasco Marion Hillsborough
Mr. Moses Brown	Connerton LTAC	▪ Community Pastor ▪ LTAC Chaplain	▪ Community / faith community ▪ Low-income, minority and underserved ▪ Patients and families including the elderly	Pasco
Chief Timothy Reardon	Pasco County Fire & Rescue	▪ EMS Chief	▪ First responders	Pasco
Galo Eduardo Alav, MD	St. Leo College - School of HealthCare Mgt.	▪ Assistant Professor	▪ Community Health ▪ Low-income, minority and underserved ▪ Elderly	Pasco
Ms. Miguelina Batista, RN	FH Connerton & Community	▪ Community Pastor ▪ LTAC Staff ▪ Spiritual Ambassador	▪ Community and minority groups ▪ Faith community ▪ Caring for LTAC patients	Pasco
Mr. Norm Stein	Connerton LTAC Board	▪ Community Member ▪ Former UCH CEO	▪ Needs of elderly and low-income	Hillsborough
Ms. Chris Abarca	Pasco County Health Dept.	▪ Assistant Director	▪ Public health ▪ Needs assessments (10 years with state for all Florida Counties) ▪ Low-income, minority and underserved ▪ Elderly	Pasco
Ms. Deanna Krautner	Pasco County Health Dept.	▪ Health Educator	▪ Public health ▪ Chronic disease ▪ Low-income, minority and underserved	Pasco

## 5. STAKEHOLDER INPUT PROCESS

In addition to gathering input from the Community Health Needs Assessment Committee (CHNAC), Florida Hospital at Connerton LTAC conducted structured interviews with stakeholders representing the broad community as well as low-income, minority, elderly and other underserved populations.

The interviewees were chosen based on:

- Connerton LTAC patient/family experience
- Caregiver expertise (family and/or first responders)
- Public Health expertise
- Faith community leadership
- Elderly population expertise
- Knowledge of the health needs of low-income, minority and other underserved populations

### Stakeholder Interview Questions

We asked community stakeholders the following questions:

1. How would you rate our community's **overall health status**? *Excellent, good, fair, poor or very poor?*
2. How would you rate the **health status of people over 65**? *Excellent, good, fair, poor or very poor?*
3. How would you rate our community's overall **quality of life**? *Excellent, good, fair, poor or very poor?*
4. How would you rate the **quality of life** for people over 65? *Excellent, good, fair, poor or very poor?*
5. Which **four diseases/health issues** do you believe are the most common in our community?

Cancer – general	Obesity
Breast cancer	Smoking
Respiratory diseases – adults	Substance abuse – alcohol
Asthma – children	Substance abuse – drugs
Diabetes	Mental Health disorders
Heart disease	Dental problems
High blood pressure	Immunizations – children
Poor Nutrition	Immunizations – adults
Lack of physical activity	Other (describe)

6. Which **three behavioral risk factors** do you believe are the most common in our community?

Access to affordable health care	Lack of safe places for physical activity
Access to physicians	High number of uninsured people
Inadequate transportation	Poverty
Lack of grocery stores	Unemployment
Access to fresh, healthy food	Illiteracy
Wearing seatbelts	Other (describe)

The responses to this Stakeholder Survey can be found in section "9. DATA COLLECTION & ANALYSIS" of this document.

## 6. PUBLIC HEALTH

Michael Napier, MS, has worked in public health for over 25 years. Before coming to the Pasco County Health Department, Mr. Napier was the director of the Seminole County Health Department. In this role, he coordinated the assessment, planning and implementation of public for Seminole County. He was also selected by state and local leadership to evaluate and devise a systematic approach to improving the quality of life in Seminole County through effective public health initiatives. Prior to that, Mr. Napier worked for the Hillsborough Department of Health, as well as the health departments in Orange and Osceola Counties.

Christine Abarca, MPH, MCHES, the Assistant Director of the Pasco County Department of Health (DOH), is a member of the Community Health Needs Assessment Committee. Prior to working in Pasco County, Ms. Abarca was with the state DOH office in Tallahassee, where she was responsible for DOH Community Health Needs Assessments in Florida's 67 counties.

Deanna Krautner, MEd, CHES, is the Health Education Program Manager and Public Information Officer for the Pasco County Department of Health. Ms. Krautner also serves on the Healthy Tampa Bay Steering Committee. As a chronic disease specialist, she leads the Get Healthy Pasco! Coalition that promotes healthy lifestyles for county resident. Partners include health care providers, the district school board, community-based partners, the business community and academic partners.

Mr. Napier and Ms. Krautner also participated in the Community Health Needs Assessments for Florida Hospitals Wesley Chapel and Zephyrhills in Pasco County. The Hillsborough County Department of Health participated in the Florida Hospital Tampa and Carrollwood assessments.

## 7. DATA SOURCES

### Primary Data

- Hospital utilization data including Primary Service Area, demographics and Top 10 diagnoses
- Stakeholder interviews
- Community Health Needs Assessment Committee input

### Secondary Data

- U.S. Census data 2010 (<http://quickfacts.census.gov> and <http://censusviewer.com> )
- <http://city-view.com>
- Healthy Tampa Bay / Healthy Communities (*How Healthy is Tampa Bay?* 2013 regional community health needs assessment)
  - Healthy People 2020 data
  - Florida 2009 BRFSS report
  - Florida DOH 2002 CHARTS data
  - National Cancer Institute
  - Centers for Disease Control
  - American Community Survey
- Hillsborough County Department of Health 2010/2011 Community Health Profile
- Hillsborough County Department of Health 2013 BRFSS Data
- Pasco County Department of Health 2010/11 Community Health Profile
- Pasco County Department of Health 2013 BRFSS Data

## 8. DATA FINDINGS & ANALYSIS

Section 9 (A-G) of the 2014 Community Health Needs Assessment explains the Primary and Secondary data findings for Florida Hospital at Connerton LTAC.

The section also explains the process that the Community Health Needs Assessment Committee used to determine the priorities that Connerton LTAC would address in its Community Health Plan (Implementation Strategies).

### 9.A. Primary Data: Findings from Hospital Utilization Data

#### LTAC Patient Origins

The table below shows the LTAC patient origins from January 1, 2013 through October 31, 2014. Pasco and Hillsborough Counties accounted for 81.6% of the admissions. Another 5.2% lived in Hernando County, and 4.9% lived in Polk County. The remaining patients (8.3%) lived in 48 other counties, mostly but not all in Florida.

**Florida Hospital at Connerton LTAC  
Discharge Analysis**  
*January 1, 2013 – October 31, 2014*

COUNTY	NUMBER OF PATIENTS	COUNTY	NUMBER OF PATIENTS
ALACHUA	1	LEVY	1
BREVARD	2	MANATEE	3
BROWARD	1	MARION	1
CAPE MAY	1	MASON	1
CHARLOTTE	4	MIDDLESEX	1
CITRUS	21	NEW CASTLE	1
COLLIER	2	OAKLAND	2
COLUMBIA	1	ORANGE	5
CUYAHOGA	1	OSCEOLA	1
DUPAGE	1	<b>PASCO</b>	<b>389</b>
ELLIS	1	PAULDING	1
ERIE	2	PINELLAS	35
ESCAMBIA	1	<b>POLK</b>	<b>60</b>
GILCHRIST	1	PUTNAM	1
GRANT	1	SAINT LUCI	2
HARDEE	1	SAINT TAMM	1
<b>HERNANDO</b>	<b>84</b>	SARASOTA	2
HIGHLANDS	5	SARATOGA	1
<b>HILLSBOROUGH</b>	<b>551</b>	SEMINOLE	1
HILLSBOROW	1	SUMTER	4
HOUSTON	1	VOLUSIA	4
KINGS	1	WALTON	1
LAKE	6	WASHINGTON	1
LEE	13	WORTH	1

## LTAC Reasons for Admissions

Top 10 reasons for admission to Connerton LTAC in 2013 and 2014 were:

1. Respiratory failure
2. Septicemia (systemic infection)
3. Decubitus Ulcer / Pressure Ulcers (bedsores)
4. Post-operative infections
5. Pneumonia
6. Aspiration pneumonitis
7. Uncontrolled Diabetes Mellitus Type 2
8. Exacerbation COPD (lung disease)
9. Cellulitis lower extremities (infection)
10. Post-operative wound care (infection)

## LTAC Gender and Ethnicity

From January 2013 through October 31, 2014, Florida Hospital at Connerton LTAC discharged 655 patients.

- 50.9% were men and 49.1% were women.
- 66% were Caucasian, 15% were Black, 8% were Hispanic and 11% were Other.

## LTAC Age

The Medicare and Medicare-Managed Care patients (age 65 and older) show that 83.7% and 81.8% of 2013 and 2014 patients (respectively) were age 65 or older. The average patient age was 67.9 years old in 2013 and 68.57 years old in 2014.

	2013	2014 Oct YTD
Medicare	56.1%	55.3%
Medicare-Managed	27.6%	26.5%
<b>TOTAL Medicare</b>	<b>83.7%</b>	<b>81.8%</b>

## 9.B. Primary Data: Findings from Stakeholder Interviews

The Stakeholder Interview findings below note the interviewees' role in the community; how they represented public health and/or low-income, minority, elderly and other underserved populations; their county of residence or business; and their perception of the three greatest health needs in the LTAC service area. Overall, they identified chronic disease, respiratory disease and cancer as top health concerns. The top risk factors were smoking, transportation, access to care and lack of safe places for physical activity.

Name	Affiliation	County	Population represented (community, agency, family)	Low-income, minority, elderly or other underserved population?	Health Status & Q of Life – Overall	Health Status & Q of Life –65+	Top Health Concerns	Top Health Risk Factors
Mike Fasano	Property Appraiser & 19-year member of FL Legislature	Pasco (parts of Pinellas, Citrus & Hernando)	Community	65+, low-income, uninsured	Good Good	Good Good+	Cancer, heart disease, diabetes, alcohol abuse	Access to care, smoking, obesity
Sally Gronda	Director, Pasco-Pinellas Area Agency on Aging	Pasco & Pinellas	Community	65+	N/A	N/A	Respiratory, chronic disease	Health care costs, health transportation
Melissa Fahy	Director, Good Samaritan Health Clinic	Pasco and surrounding area	Community	Low-income, minority and uninsured	Fair N/A	Fair/ Poor N/A	Diabetes HTN COPD	Smoking Nutrition Transportation Poverty
	CHNAC & Connerton LTAC Staff	Pasco Hillsborough	See CHNAC list on p. 19	Broad community, low-income, minority, underserved	Good Good	Good Good	Breast cancer, HTN, diabetes	Physician access, transportation, poverty, obesity, lack of safe places for physical activity
	"	"	"	"	Fair Fair	Good Good	Cancer, mental health	Smoking, obesity, lack of safe places for physical activity, unemployment
	"	"	"	"	Fair Poor	Good Fair	Cancer, diabetes, HTN, heart disease	Poor nutrition, transportation, poverty, lack of safe places for physical activity
	"	"	"	"	Good Good	Good Good	Cancer, heart disease	Smoking, obesity, poverty, access to affordable health care, lack of education
	"	"	"	"	Good Fair	Good Good	Cancer, diabetes, HTN, heart disease	Lack of physical activity, unemployment, smoking, substance abuse
	"	"	"	"	Fair Fair	Good Good	Cancer, mental health, substance abuse	Obesity, access to affordable care, transportation



## 9.C. Secondary Data: U.S. Census Data

Florida Hospital Connerton LTAC used U.S. Census Data to understand the demographics of Pasco and Hillsborough Counties, and the cities within them. That information is included in section "4. DESCRIPTION OF THE COMMUNITY SERVED" in this document.

In general, Pasco County residents were older and had slightly lower incomes than the rest of Florida. Nearly 80% of Pasco residents are Caucasian/White.

Hillsborough County is far more diverse than Pasco County. Just over half of the residents are Caucasian/White. African Americans and Hispanics comprise another 43%. Hillsborough is also younger, more educated and slightly more affluent.

In general, the diversity of Connerton LTAC patients is in line with the primary service area.

## 9.D. Primary & Secondary Data: Healthy Tampa Bay

The Tampa Bay Partnership was founded in 1994 by local business leaders and elected officials as a partnership among regional economic development organizations, stakeholders and businesses. Close to 150 public and private businesses, along with 11 regional economic development organizations, make up the Partnership. The eight participating counties are Citrus, Hernando, Hillsborough, Manatee, Pasco, Pinellas, Polk and Sarasota Counties.

In 2010, the Partnership created a Steering Committee and asked Healthy Communities Institute (HCI) to:

1. Convene and challenge a diverse group of stakeholders (called **Healthy Tampa Bay**) from the public, private and non-profit sectors to find ways for the region to work together to achieve more positive health outcomes.
2. Conduct a regional Community Health Needs Assessment
3. Make public all data findings through an interactive web site ([www.healthytampabay.com](http://www.healthytampabay.com))

Healthy Tampa Bay Steering Committee	
<b>Steve Mason*</b> Chair, Healthy Communities Steering Committee President & CEO, BayCare Health System	<b>Gwen MacKenzie</b> President & CEO, Sarasota Memorial Hospital
<b>Diana Baker</b> CEO-President, United Way of Tampa Bay	<b>Dan Mahurin*</b> Chair, TBP Regional Research & Education Foundation Chairman, President & CEO, SunTrust Bank, Tampa Bay
<b>George Banks, MD</b> Medical Director, Manatee County Health Department	<b>Ernest Marquart</b> Managing Partner, Shumaker, Loop & Kendrick, LLP
<b>Jennifer Bencie, MD, MSA</b> Administrator, Manatee County Department of Health	<b>Jean Mayer</b> Senior Vice President, Strategic Services Tampa General Hospital
<b>Alan Bomstein</b> President, Creative Contractors, Inc.	<b>William (Bill) McHugh</b> CEO, Florida Region, AMERIGROUP Community Care
<b>Eileen Coogan Boyle</b> President & CEO, Allegany Franciscan Ministries	<b>Suzy O'Malley</b> VP, American Heart Association Metro Tampa Bay
<b>Maureen "Moe" Freaney</b> Bureau Director, Health & Human Services, Pinellas County	<b>Tom Pankey</b> Managing Director/Advisory Services, KPMG LLP

## Healthy Tampa Bay Steering Committee

*\* denotes Executive Committee*

**Leslene Gordon, PhD, RD, LD/N**

Community Health Director, Hillsborough County  
Department of Health

**G. Scott Goyer**

Executive Director, YMCA of the Suncoast

**Daniel Haight, MD**

Director, Polk County Department of Health

**Ron Hytoff**

President & CEO, Tampa General Hospital

**William Johnson**

Director of Shared Services  
Coca-Cola Enterprises Bottling Companies

**Richard Karl, MD**

Surgeon, USF Health

**Stephen Klasko, MD**

Vice President, Health Sciences; Dean, College  
of Medicine, USF Health Sciences Center

**Jack Kolosky**

EVP, Chief Operating Officer  
H. Lee Moffitt Cancer Center & Research Institute

**Barbara Langland Orban, PhD**

Associate Professor and Chair, Department of Health Policy &  
Management, USF College of Public Health

**Rick Lentz, LEED AP**

Florida Regional Vice President, Cutler Associates, Inc.

T. David Lewis

**CEO, United Healthcare of Florida, Inc.**

**Celeste Philip, MD, MPH**

Senior Physician, Polk County Department of Health

**David Pizzo\***

Market President, BlueCross BlueShield of Florida

**Michelle Robinson\***

President - Southeast Region, Verizon

**Stuart Rogel\***

President & CEO, Tampa Bay Partnership

**Jayne S. Rothberg, MS, RT**

Dean, Health Occupations, Pasco-Hernando  
Community College

**The Honorable Karen Seel**

Vice-Chair, Commissioner - District 5, Pinellas County

**Mickey Smith**

CEO, Oak Hill Hospital

**G. Scott Goyer**

Executive Director, YMCA of the Suncoast

**Daniel Haight, MD**

Director, Polk County Department of Health

**Ron Hytoff**

President & CEO, Tampa General Hospital

**Jim Vett**

General Manager/VP, Vanguard Advanced  
Pharmacy Systems

*Florida Hospital did not operate its Tampa-area facilities until September 2010. The system contributed financially to Healthy Tampa Bay and participated in the various work groups, but was not actively involved in the early Steering Committee.*

### Healthy Tampa Bay Steering Committee Process

With the Healthy Tampa Bay Steering Committee, Healthy Communities Institute (HCI) assessed the region's health and published a report entitled *How Healthy is Tampa Bay?* (This report is located on this same web site.) A public website ([www.healthytampabay.com](http://www.healthytampabay.com)) has real-time data featuring over 100 indicators of health. The collaboration also conducted a regional forum.

### Key Findings & Recommendations from How Healthy is Tampa Bay?

1. A higher proportion of the Tampa Bay population is age 55 or older than most other parts of Florida.
2. The Tampa Bay region faces major health challenges around:
  - a. Suicide
  - b. Infant deaths
  - c. Low birth-weight babies
  - d. Obesity

- e. Smoking
- f. Motor vehicle deaths
3. The Healthy Tampa Bay Steering Committee selected Obesity as the primary issue, and recommended a regional goal of increasing the number of people with healthy weights by 10% by 2025.

#### **9.E. Secondary Data: Pasco County Department of Health 2010/2011 Community Health Profile**

In 2010 and 2011, the Pasco County Department of Health conducted a community needs assessment process using the Florida CHARTS community health assessment tool. The CHARTS web site provides statewide public health statistics by county, including births, deaths, communicable and chronic diseases, and more.

The key issues identified in the Pasco County assessment were:

1. Unemployment
2. Access to dental care
3. Melanoma
4. Asthma
5. Immunizations for Kindergarteners
6. Unintentional injuries
7. Suicide

#### **9.F. Secondary Data: Hillsborough County Department of Health 2010/2011 Community Health Profile**

In 2010 and 2011, the Hillsborough County Department of Health conducted the same community needs assessment process using the Florida CHARTS community health assessment tool. The CHARTS web site provides statewide public health statistics by county, including births, deaths, communicable and chronic diseases, and more.

The key issues identified in the Hillsborough County assessment were:

1. Households in which no one speaks clear English
2. Lack of physical activity
3. Obesity
4. Asthma
5. Vaccine-preventable diseases
6. Immunizations for pre-kindergarten children
7. HIV / AIDS
8. Tuberculosis
9. Sexually transmitted diseases
10. Repeat births in mothers 15-19
11. Neonate death rate

## 9.G. Primary & Secondary Data: Findings from other Florida Hospital facilities in Tampa Bay

In 2013, the four other Florida Hospital facilities in the Tampa region conducted their Community Health Needs Assessments using the same methodology as Connerton LTAC. The chart below shows the top priorities for each facility.

Pasco County	
<p><b>Florida Hospital Wesley Chapel</b></p> <ul style="list-style-type: none"> <li>Obesity</li> <li>Diabetes</li> <li>COPD</li> <li>Heart Disease</li> <li>Pneumonia</li> <li>Asthma</li> </ul>	<p><b>Florida Hospital Zephyrhills</b></p> <ul style="list-style-type: none"> <li>Diabetes</li> <li>Lack of access to primary care</li> <li>Heart disease</li> <li>Stroke</li> </ul>
Hillsborough County	
<p><b>Florida Hospital Tampa</b></p> <ul style="list-style-type: none"> <li>Mental Health</li> <li>Diabetes</li> <li>Lack of Access to Primary Care</li> <li>Lack of (health) Education and Awareness</li> </ul>	<p><b>Florida Hospital Carrollwood</b></p> <ul style="list-style-type: none"> <li>Lack of Primary Care/Access to Primary Care</li> <li>Lack of Education</li> <li>High Cholesterol/Hypertension</li> <li>Diabetes</li> <li>Asthma/Respiratory Diseases</li> </ul>

## 9. DATA SUMMARY

The Community Health Needs Assessment Committee for Florida Hospital at Connerton LTAC reviewed the data from each of the data primary and secondary sources described above. They aggregated those findings into a list (next page) that reflected all data sources.

The Committee then looked at the acuity of each issue, determined who in the community was working on the issue, and discussed the “fit” with hospital services. Based on those criteria, they narrowed the list to the Connerton LTAC community’s top needs. Those needs would be addressed in the Connerton LTAC Community Health Plan (Implementation Strategies) also posted on this website.

While the data for the Primary Service Area was readily available and understandable, the definition of the Connerton LTAC service area was very broad because Florida Hospital at Connerton LTAC accepts patients from 52 counties in Florida and other states. For example, even Hillsborough County, in which 46.3% of Connerton LTAC patients live, is some distance from the hospital. Further, Connerton LTAC does not offer the services – surgery, an Emergency Department, health education, etc. – found in a “regular” community hospital. These factors challenged the Community Health Needs Assessment Committee to determine workable priorities and manageable interventions.

## 10.A. Preliminary Data – High-level Findings re Top Health Issues

Note: The health priorities in for all sources are ranking in random, not priority, order.

<i>Primary Data</i>
<b>Top 8-10 health priorities determined by CHNAC &amp; Stakeholder Interviews</b>
<ol style="list-style-type: none"><li>1. Chronic disease (respiratory, diabetes, heart disease, hypertension)</li><li>2. Lifestyle (smoking, obesity, nutrition)</li><li>3. Access to care (family transportation to LTAC, nearby lodging for families)</li><li>4. Transportation (general)</li><li>5. Family/employee caregiver burnout and compassion fatigue</li><li>6. Patient placement for brain and spinal cord injuries</li><li>7. Cancer</li><li>8. Mental health and substance abuse</li><li>9. LTAC Capacity</li></ol>

<i>Primary Data</i>
<b>Top health priorities determined by Connerton LTAC Patient Data</b>
<ol style="list-style-type: none"><li>1. Respiratory failure</li><li>2. Septicemia (systemic infection)</li><li>3. Decubitus Ulcer / Pressure Ulcers (bedsores)</li><li>4. Post-operative infections</li><li>5. Pneumonia</li><li>6. Aspiration pneumonitis</li><li>7. Uncontrolled Diabetes Mellitus Type 2</li><li>8. Exacerbation COPD (lung disease)</li><li>9. Cellulitis lower extremities (infection)</li><li>10. Post-operative wound care (infection)</li></ol>

<i>Secondary Data</i>
<b>Top health priorities determined by Healthy Tampa Bay data</b> <i>(includes Public Health BRFSS &amp; CHARTS, and Healthy People 2020 data)</i>
<ol style="list-style-type: none"><li>1. Obesity</li><li>2. Suicide</li><li>3. Infant deaths</li><li>4. Low birth-weight babies</li><li>5. Smoking</li><li>6. Motor vehicle deaths</li></ol>

<i>Secondary Data</i>
<b>Top health priorities determined by Pasco County Department of Health 2010/2011 Community Profile</b>
<ol style="list-style-type: none"><li>1. Unemployment</li><li>2. Lack of access to dental care</li><li>3. Melanoma</li><li>4. Asthma</li><li>5. Immunizations – pre-Kindergarten</li><li>6. Unintentional injuries</li><li>7. Suicide</li></ol>

*Secondary Data*

**Top health priorities determined by Hillsborough County  
Department of Health 2010/2011 Community Profile**

1. Households in which no one speaks English well
2. Lack of physical activity
3. Obesity
4. Asthma
5. Immunizations – all
6. Immunizations pre-kindergarten
7. HIV/AIDS
8. Tuberculosis
9. Sexually transmitted diseases
10. Infant death rate
11. Repeat pregnancies in mothers 15-19

*Secondary Data*

**Top health priorities determined by Other Florida Hospital Facilities in  
Pasco and Hillsborough Counties**

1. Obesity
2. Diabetes
3. Asthma / pneumonia / respiratory conditions
4. Lack of access to health care, especially primary care
5. Heart disease / stroke

## 10.B. Aggregated Service Area Priorities based on the Issues listed above

The Florida Hospital at Connerton LTAC staff aggregated the above priorities into the following list. The Community Health Needs Assessment Committee reviewed the list to determine its accuracy, and then prioritized Connerton LTAC's top community priorities.

The aggregated list below is in alphabetical order. "CHNAC/SI" refers to the Community Health Needs Assessment Committee for Connerton LTAC and other Stakeholder Interviews.

Health Issue	Identified by:	Ethnic Group or Low-income	Age Group	Variations (state, county or national)	Selection Rationale
<b>Access to primary care / un- and underinsured</b>	<ul style="list-style-type: none"> <li>Other Florida Hospitals in region</li> </ul>	Greater in minority and low-income communities	All	<ul style="list-style-type: none"> <li>The uninsured rate for adults in the Tampa region is 25.5%. Pasco's rate is 23.9 and Hillsborough's is 23.7.</li> <li>The uninsured rate for adults by ethnicity is 21.4% for Whites, 40.5% for Hispanics, 26.8% for Blacks and 26.9% for Asians.</li> <li>Most Connerton LTAC patients have Medicare, Medicaid or other insurance at admission.</li> </ul>	<ul style="list-style-type: none"> <li>Pasco &amp; Hillsborough uninsured rates are slightly lower than region.</li> <li>LTAC insurance often runs out when payers limit the number of days they will pay</li> </ul>
<b>Access to dental care</b>	<ul style="list-style-type: none"> <li>Pasco DOH</li> </ul>	Greater in minority and low-income communities	Mostly adults	<ul style="list-style-type: none"> <li>Minimal adult dental services in Pasco County for uninsured</li> <li>Medicaid covers dental care for many children</li> </ul>	<ul style="list-style-type: none"> <li>Adults often use hospital ERs for dental crises</li> </ul>
<b>Caregiver burnout &amp; compassion fatigue</b>	<ul style="list-style-type: none"> <li>LTAC families</li> <li>LTAC staff</li> <li>CHNAC/SI</li> </ul>	All	All	<ul style="list-style-type: none"> <li>Connerton's average length of stay is 25 days; patients are very ill.</li> <li>Patients' families experience loss, grieving, stress and frustration.</li> <li>First responders (EMS, police &amp; fire) and staff report high levels of stress (on Safety Attitude Questionnaire).</li> </ul>	<ul style="list-style-type: none"> <li>Burnout is shown to cause illness, absenteeism, economic burdens and depression among families and caregivers.</li> </ul>
<b>Cancer</b>	<ul style="list-style-type: none"> <li>Pasco DOH</li> </ul>	All	Mostly adults	<ul style="list-style-type: none"> <li>Overall Pasco County cancer rate is 10.9% vs. 7.6% for the state</li> <li>Cancer rate in ages 65+ is 24.7% vs. 18.8% for the state</li> </ul>	<ul style="list-style-type: none"> <li>Higher rates than state average</li> </ul>
<b>Cancer – melanoma</b>	<ul style="list-style-type: none"> <li>Hillsborough DOH</li> <li>Pasco DOH</li> <li>CHNAC/SI</li> </ul>	All	Mostly adults	<ul style="list-style-type: none"> <li>Hillsborough County rate is 7.3%</li> <li>Pasco County rate is 12.1 vs. 8.7% for the state</li> </ul>	<ul style="list-style-type: none"> <li>Preventable cancer</li> </ul>
<b>Chronic Disease – diabetes</b>	<ul style="list-style-type: none"> <li>LTAC data</li> <li>CHNAC</li> <li>Other Florida Hospitals in region</li> </ul>	Higher death rates in Blacks	Adults	<ul style="list-style-type: none"> <li>U.S. diabetes rate is 5.7% of the population; Tampa area rate is 8.0%.</li> <li>Hillsborough rate is 11.8% (state is 10.7%)</li> <li>Age-adjusted death rates per 100 people are 50.6% for Blacks, 26.1% for Hispanics, and 25.1% for whites.</li> <li>Blacks have twice the diabetes mortality rate as whites.</li> </ul>	<ul style="list-style-type: none"> <li>Up to 6 of 10 top reasons for LTAC admission are for infections and other conditions exacerbated by diabetes</li> </ul>
<b>Chronic Disease – respiratory / asthma</b>	<ul style="list-style-type: none"> <li>Connerton data</li> <li>CHNAC</li> <li>Healthy Tampa Bay</li> <li>Other Florida Hospitals in region</li> </ul>	All	65+	<ul style="list-style-type: none"> <li>COPD in Tampa region is 207.9 per 100,000 vs. 193 nationally</li> <li>Per 100,000 people, Pasco's smoking rate is 30.4 and Hillsborough's is 22.1 vs. 19.3 in FL</li> <li>Lung cancer rate in Tampa region is 55.7 per 100,000 vs. 51.2 in FL</li> </ul>	<ul style="list-style-type: none"> <li>#1 reason for LTAC admission</li> <li>High smoking rate is linked to cancers and lung disease</li> </ul>

Health Issue	Identified by:	Ethnic Group or Low-income	Age Group	Variations (state, county or national)	Selection Rationale
<b>Communicable Diseases – reporting</b>	<ul style="list-style-type: none"> <li>Hillsborough DOH</li> </ul>	All	All	<ul style="list-style-type: none"> <li>Hillsborough DOH cites inadequate reporting of communicable diseases. Goals is to improve reporting rate by 25% by 2015</li> <li>High rates of AIDs, HIV and STDs in Hillsborough</li> </ul>	<ul style="list-style-type: none"> <li>Preventable disease</li> </ul>
<b>Communicable Diseases – immunizations all</b>	<ul style="list-style-type: none"> <li>Hillsborough DOH</li> </ul>	All	Adults	<ul style="list-style-type: none"> <li>HIV/AIDS</li> <li>TB</li> <li>STDs</li> </ul>	<ul style="list-style-type: none"> <li>Preventable disease</li> </ul>
<b>Communicable Diseases – immunizations pre-K</b>	<ul style="list-style-type: none"> <li>Pasco &amp; Hillsborough DOH</li> </ul>	All	Children 0-5		<ul style="list-style-type: none"> <li>Preventable disease</li> </ul>
<b>Obesity</b>	<ul style="list-style-type: none"> <li>Healthy Tampa Bay</li> <li>CHNAC</li> <li>Hillsborough DOH</li> <li>Pasco DOH</li> <li>Other Florida Hospitals in region</li> </ul>	Higher rates in Blacks & Hispanics	All	<ul style="list-style-type: none"> <li>62% of Tampa region residents are overweight or obese</li> <li>Compared with whites, Blacks have a 51% higher obesity rate and Hispanics have a 21% higher rate.</li> <li>29.3% of Hillsborough residents were obese in 2013 – a significant increase from 24.9% in 2007.</li> <li>Pasco obesity rate in 2013 was 30.7% vs. 26.4% for the state</li> </ul>	<ul style="list-style-type: none"> <li>Obesity is related to diabetes, heart disease and cancer</li> </ul>
<b>Health literacy &amp; education</b>	<ul style="list-style-type: none"> <li>Hillsborough DOH</li> <li>CHNAC/SI</li> </ul>	Hispanics Low-income	Adults	<ul style="list-style-type: none"> <li>Defined as major issue by Hillsborough and Pasco DOH representatives</li> </ul>	<ul style="list-style-type: none"> <li>Key factor in understanding health risk factors and disease</li> </ul>
<b>Heart disease &amp; stroke</b>	<ul style="list-style-type: none"> <li>Other Florida Hospitals in region</li> </ul>	All	Adults	<ul style="list-style-type: none"> <li>Heart failure rate in Pasco County is 16.8% compared to 13.9% in Hillsborough (Pasco residents are older).</li> </ul>	<ul style="list-style-type: none"> <li>Associated with diabetes</li> <li>Risk factors are lifestyle-related</li> </ul>
<b>Infant death &amp; low birth weight babies</b>	<ul style="list-style-type: none"> <li>Healthy Tampa Bay</li> <li>Hillsborough DOH</li> </ul>	Higher rates in Black mothers	Infants	<ul style="list-style-type: none"> <li>Region’s infant death rate is 6.6 deaths per 1,000; Healthy People target is 6.0</li> <li>Infant death rate is 12.1 in Blacks, 7.0 in Hispanics, 5.4 in Whites</li> <li>Region’s low birth weight rate is 8.4/1,000 births; Healthy People 2020 target is 7.8</li> <li>Low birth weight rate is 13.3% in Blacks, 7.2% in Hispanics, 7.3% in Whites</li> <li>Teen pregnancy rates higher than Florida and US rates</li> </ul>	<ul style="list-style-type: none"> <li>Issue is greater in Hillsborough County (it is younger)</li> <li>High rates of repeat pregnancies in mothers age 15-19 in Hillsborough</li> </ul>
<b>Injury &amp; Violence – unintentional injuries</b>	<ul style="list-style-type: none"> <li>Hillsborough DOH</li> </ul>	All	All	<ul style="list-style-type: none"> <li>See Suicide issue (below)</li> <li>Hillsborough’s adjusted death rate is 50.74% compared to state rate of 44.1%</li> </ul>	<ul style="list-style-type: none"> <li>Leading cause of death countywide for ages 15-54</li> </ul>
<b>Injury &amp; Violence – motor vehicle accidents</b>	<ul style="list-style-type: none"> <li>Healthy Tampa Bay</li> <li>Pasco DOH</li> </ul>	All	All	<ul style="list-style-type: none"> <li>2009 motor vehicle death rate per 100,000 people was 15.4 in Pasco and 12.6 in Hillsborough. National rate is 11.1 and Florida’s rate is 13.1.</li> <li>Pedestrian death rate is 2.5 per 100,000, the same rate as the Healthy People 2020 target.</li> </ul>	<ul style="list-style-type: none"> <li>Motorcycle accidents are especially deadly.</li> <li>Motorcycle ridership is far less in people over 65.</li> </ul>



Health Issue	Identified by:	Ethnic Group or Low-income	Age Group	Variations (state, county or national)	Selection Rationale
<b>Lodging – lack of nearby lodging for LTAC families</b>	<ul style="list-style-type: none"> <li>LTAC families and patients</li> </ul>	All	All	<ul style="list-style-type: none"> <li>Connerton LTAC is the only such facility in the region, and is located in a very rural part of the county</li> </ul>	<ul style="list-style-type: none"> <li>Closest hotels are 20+ minutes away</li> <li>Difficult access for families w/o cars</li> </ul>
<b>Obesity</b>	<ul style="list-style-type: none"> <li>Healthy Tampa Bay</li> <li>CHNAC/SI</li> <li>Pasco &amp; Hillsborough DOH</li> <li>Other Florida Hospitals in region</li> </ul>	All	All	<ul style="list-style-type: none"> <li>Pasco obesity rate is 30.7% vs. state rate of 26.4% (2013)</li> <li>Hillsborough obesity rate is 29.3% vs. state rate of 26.9% (2013)</li> </ul>	<ul style="list-style-type: none"> <li>Many stakeholder interview respondents cited a lack of safe places for physical activity</li> </ul>
<b>Smoking</b>	<ul style="list-style-type: none"> <li>Healthy Tampa Bay</li> <li>Hillsborough DOH</li> <li>Pasco DOH</li> <li>CHNAC/SI</li> </ul>			<ul style="list-style-type: none"> <li>Hillsborough rate is 18.2% vs. 16.8% in state (2013)</li> <li>Pasco rate is 24.0% (2013)</li> </ul>	<ul style="list-style-type: none"> <li>Smoking is a risk factors for lung cancer and other respiratory conditions</li> </ul>
<b>Social &amp; Mental Health – substance abuse</b>	<ul style="list-style-type: none"> <li>CHNAC/SI</li> </ul>			<ul style="list-style-type: none"> <li>Pasco heavy/binge drinking rate is 20.1% vs. 17.6% for state (2013)</li> <li>Hillsborough rate is 15.3%</li> </ul>	<ul style="list-style-type: none"> <li>Highest rate is in 18-44 and 45-64 age groups</li> </ul>
<b>Social &amp; Mental Health – suicide</b>	<ul style="list-style-type: none"> <li>Healthy Tampa Bay</li> <li>Pasco &amp; Hillsborough DOH 2010/2011 Profiles</li> </ul>	Higher rates in males		<ul style="list-style-type: none"> <li>Male suicide rate is 21.1 deaths per 100,000 compared to 5.1 for female</li> <li>White suicide rate was 12.7%, Black rate was 2.3%, and Hispanic rate was 7.3%</li> <li>The region’s suicide rate meets the Healthy People 2020 target of 12.7%</li> </ul>	<ul style="list-style-type: none"> <li>Pasco has Florida’s fourth highest suicide rate especially in youth</li> <li>Extreme statistics for while males</li> </ul>
<b>Transportation – LTAC families</b>	<ul style="list-style-type: none"> <li>LTAC data</li> <li>CHNAC/SI</li> </ul>	All	All	<ul style="list-style-type: none"> <li>No public transportation near LTAC</li> </ul>	<ul style="list-style-type: none"> <li>Lack of nearby lodging creates transportation need for LTAC families</li> </ul>
<b>Transportation – general</b>	<ul style="list-style-type: none"> <li>CHNAC/SI</li> </ul>	Greater in minority and low-income communities	65+	<ul style="list-style-type: none"> <li>Lack of adequate transportation is worse for older people and in rural parts of the community</li> </ul>	<ul style="list-style-type: none"> <li>Rural community</li> </ul>

## 10.C. Asset Inventory

The following Asset Inventory (in alphabetical order to match the list above) includes the top health priorities for the Connerton LTAC community, and shows the services related to these areas of concern both in the community and at Florida Hospital. An Asset Inventory can help prevent the duplication of services and was therefore important to the Community Health Needs Assessment Committee and Connerton LTAC staff in determining the hospital's top health priorities.

Health Issue	Community Assets & Programs	Florida Hospital Assets & Programs
<b>Access to health care/uninsured</b>	<ul style="list-style-type: none"> <li>▪ Marketplace Enrollment Navigators in hospitals and community</li> <li>▪ Hospital Medicaid enrollment specialists</li> <li>▪ Good Samaritan Clinic</li> <li>▪ Premier Community Healthcare Group (FQHC) – 5 sites</li> <li>▪ Tampa Family Health Centers (FQHC) – 12 sites</li> </ul>	<ul style="list-style-type: none"> <li>▪ Navigators at Florida Hospital Tampa and Carrollwood</li> <li>▪ Medicaid enrollment at all Florida Hospitals</li> </ul>
<b>Access to dental care</b>	<ul style="list-style-type: none"> <li>▪ Tampa FQHCs</li> <li>▪ Pasco FQHCs</li> </ul>	<ul style="list-style-type: none"> <li>▪ N/A</li> </ul>
<b>Caregiver burnout &amp; compassion fatigue</b>	<ul style="list-style-type: none"> <li>▪ Pasco-Pinellas &amp; Hillsborough Area Agencies on Aging fund some counseling, training &amp; support</li> <li>▪ Community respite care programs (fee-based)</li> <li>▪ CARES Florida services to keep 65+ at home</li> </ul>	<ul style="list-style-type: none"> <li>▪ Connerton LTAC is considering a Caregiver support program</li> </ul>
<b>Cancer</b>	<ul style="list-style-type: none"> <li>▪ American Cancer Society</li> <li>▪ FQHC screenings and testing</li> </ul>	<ul style="list-style-type: none"> <li>▪ N/A</li> </ul>
<b>Cancer – melanoma</b>	<ul style="list-style-type: none"> <li>▪ American Cancer Society</li> <li>▪ FQHC screenings and testing</li> </ul>	<ul style="list-style-type: none"> <li>▪ N/A</li> </ul>
<b>Chronic disease – Diabetes</b>	<ul style="list-style-type: none"> <li>▪ American Diabetes Association</li> <li>▪ Pasco DOH diabetes programs</li> <li>▪ Hillsborough DOH diabetes programs</li> </ul>	<ul style="list-style-type: none"> <li>▪ The 4 other FH facilities have Diabetes Education</li> <li>▪ FH Wesley Chapel has a Fitness Center program for people with diabetes</li> </ul>
<b>Chronic disease – respiratory conditions</b>	<ul style="list-style-type: none"> <li>▪ American Lung Association</li> </ul>	<ul style="list-style-type: none"> <li>▪ Connerton LTAC has expertise in respiratory failure, pneumonia and ventilator therapy.</li> </ul>
<b>Communicable diseases – reporting</b>	<ul style="list-style-type: none"> <li>▪ Hillsborough DOH</li> <li>▪ Pasco DOH</li> </ul>	<ul style="list-style-type: none"> <li>▪ N/A</li> </ul>
<b>Communicable diseases – immunizations all</b>	<ul style="list-style-type: none"> <li>▪ Hillsborough DOH</li> <li>▪ Pasco DOH</li> </ul>	<ul style="list-style-type: none"> <li>▪ N/A</li> </ul>
<b>Communicable diseases – immunizations pre-K</b>	<ul style="list-style-type: none"> <li>▪ Hillsborough DOH</li> <li>▪ Pasco DOH</li> </ul>	<ul style="list-style-type: none"> <li>▪ N/A</li> </ul>
<b>Health literacy &amp; education</b>	<ul style="list-style-type: none"> <li>▪ Hillsborough DOH</li> <li>▪ Pasco DOH</li> </ul>	<ul style="list-style-type: none"> <li>▪ LTAC educators for patients</li> <li>▪ LTAC translation services</li> </ul>
<b>Heart disease &amp; stroke</b>	<ul style="list-style-type: none"> <li>▪ American Heart Association</li> <li>▪ American Stroke Association</li> </ul>	<ul style="list-style-type: none"> <li>▪ Cardiac programs at nearly all Tampa area hospitals including Florida Hospitals</li> </ul>
<b>Infant death &amp; low birth weight babies</b>	<ul style="list-style-type: none"> <li>▪ Healthy Start Coalition of Hillsborough County</li> <li>▪ Healthy Start Coalition of Pasco County</li> <li>▪ Federal Healthy Start at USF</li> <li>▪ Healthy Families Hillsborough</li> <li>▪ Healthy Families Pasco</li> <li>▪ Hillsborough DOH: prenatal care &amp; WIC</li> <li>▪ Pasco DOH: prenatal care &amp; WIC</li> <li>▪ Tampa Bay Doula program</li> <li>▪ Community parent education programs, e.g. Baby Bungalow</li> </ul>	<ul style="list-style-type: none"> <li>▪ OB services at Florida Hospitals Tampa and Wesley Chapel</li> <li>▪ Associated parent education at Florida Hospitals Tampa and Wesley Chapel</li> <li>▪ NICU at Florida Hospital Tampa</li> </ul>

Health Issue	Community Assets & Programs	Florida Hospital Assets & Programs
<b>Injury &amp; violence – unintentional injuries</b>	<ul style="list-style-type: none"> <li>▪ Top focus of Healthy Tampa Bay</li> <li>▪ Tampa Area Safety Council serves 10 counties</li> </ul>	<ul style="list-style-type: none"> <li>▪ N/A</li> </ul>
<b>Injury &amp; violence – motor vehicle accidents</b>	<ul style="list-style-type: none"> <li>▪ Top focus of Healthy Tampa Bay</li> <li>▪ Tampa Area Safety Council serves 10 counties</li> <li>▪ DMV Accident Prevention Course</li> </ul>	<ul style="list-style-type: none"> <li>▪ N/A</li> </ul>
<b>Lodging – LTAC families</b>	<ul style="list-style-type: none"> <li>▪ Economic Development Commission</li> </ul>	<ul style="list-style-type: none"> <li>▪ N/A</li> </ul>
<b>Motor vehicle deaths</b>	<ul style="list-style-type: none"> <li>▪ Top focus of Healthy Tampa Bay Committee</li> <li>▪ Tampa Area Safety Council programs</li> <li>▪ DMV Accident Prevention Course</li> </ul>	<ul style="list-style-type: none"> <li>▪ N/A</li> </ul>
<b>Obesity</b>	<ul style="list-style-type: none"> <li>▪ YMCA</li> <li>▪ American Diabetes Association</li> </ul>	<ul style="list-style-type: none"> <li>▪ 4 Florida Hospitals (Wesley Chapel, Zephyrhills, Tampa &amp; Carrollwood) healthy lifestyle programs</li> <li>▪ Florida Hospital Wesley Chapel Fitness Center</li> <li>▪ CREATION Health lifestyle programs</li> </ul>
<b>Smoking cessation programs</b>	<ul style="list-style-type: none"> <li>▪ Tobacco Free Partnerships of Hillsborough and Pasco Counties</li> <li>▪ Hillsborough County DOH “FreshStart”</li> <li>▪ Pasco DOH “Tools to Quit”</li> <li>▪ Area Health Education Center (AHEC) Cessation classes and specialists</li> <li>▪ American Lung Assn. “Freedom from Smoking”</li> <li>▪ Florida Tobacco-Free Quit for Life Line</li> <li>▪ TAP (Youth Tobacco Awareness Program</li> <li>▪ SWAT (Students Working Against Tobacco)</li> </ul>	<ul style="list-style-type: none"> <li>▪ “Tools to Quit” programs at Florida Hospital Wesley Chapel and Zephyrhills</li> <li>▪ Florida Hospital Tampa AHEC classes</li> </ul>
<b>Social &amp; mental health – substance abuse (not-for-profit centers only)</b>	<ul style="list-style-type: none"> <li>▪ North Tampa Behavioral Health – inpatient and outpatient substance abuse programs</li> <li>▪ Drug Abuse Comprehensive Coordinating Office (DACCO ) – inpatient and outpatient services</li> <li>▪ Agency for Community Treatment Centers (ACTS) – inpatient and outpatient</li> <li>▪ Crisis Center of Tampa Bay</li> </ul>	<ul style="list-style-type: none"> <li>▪ Florida Hospitals in this region do not have psychiatric or substance abuse services</li> </ul>
<b>Social &amp; mental health – suicide (not-for-profit centers only)</b>	<ul style="list-style-type: none"> <li>▪ Memorial Hospital of Tampa – inpatient</li> <li>▪ St. Joseph’s Hospital Behavioral Health Center – inpatient and Baker Act center</li> <li>▪ Morton Plant North Bay Hospital Recovery Center – inpatient and Baker Act center</li> <li>▪ Tampa Community Behavioral Health – inpatient</li> <li>▪ Northside Mental Health Center – outpatient</li> <li>▪ Agency for Community Treatment Centers (ACTS) – inpatient and outpatient</li> <li>▪ Trinity Behavioral Health Center West Pasco Campus</li> <li>▪ Crisis Center of Tampa Bay</li> <li>▪ Crisis Center suicide prevention services including teen programs &amp; 211</li> <li>▪ American Foundation for Suicide Prevention – Tampa Bay chapter</li> <li>▪ Tampa Bay Suicide Prevention Task Force</li> <li>▪ Florida Suicide Hotlines – www.Suicide.org</li> </ul>	<ul style="list-style-type: none"> <li>▪ Florida Hospitals in this region do not have psychiatric services</li> </ul>
<b>Transportation – LTAC families</b>	<ul style="list-style-type: none"> <li>▪ N/A</li> </ul>	<ul style="list-style-type: none"> <li>▪ Connerton LTAC provides shuttle service from hotels to LTAC for patient families</li> </ul>
<b>Transportation – general</b>	<ul style="list-style-type: none"> <li>▪ Pasco County Public Transportation</li> <li>▪ Hillsborough Area Regional Transportation (HART)</li> </ul>	<ul style="list-style-type: none"> <li>▪ N/A</li> </ul>

# 10. PRIORITY SELECTION

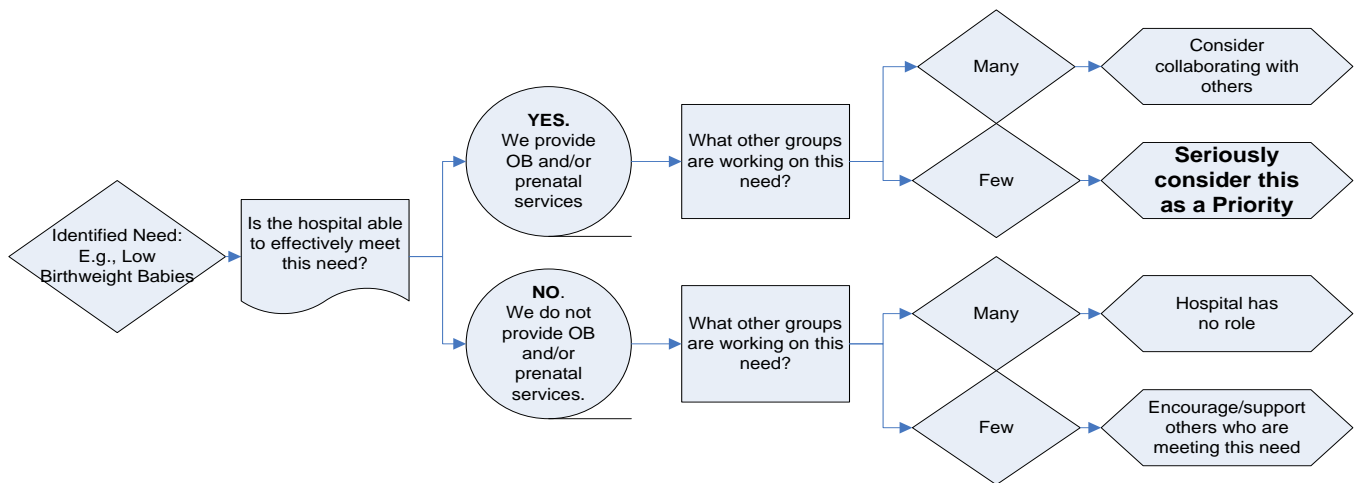
As noted in the DATA SUMMARY section above, the primary and secondary data, along with the ASSET INVENTORY, were used to narrow down the top areas of significant community health need for the Connerton LTAC community. This discussion and decisions took place at the Connerton LTAC Community Health Needs Assessment Committee in December 2014.

The Committee used a "decision tree" format to prioritize the top needs down that Connerton LTAC will address in its Community Health Plan.

## 11.A. Decision Tree

The Community Health Needs Assessment Committee used the decision tree to narrow down the aggregated priorities (above) into three priority areas. The decision tree Criteria for inclusion included:

1. How acute is the identified issue in the region?
2. How acute is the identified issue in the primary service area, the immediate area around Connerton LTAC, and the over-65 population?
3. Are other community resources/organizations already addressing the need? (see 10.C. Asset Inventory)
4. Can Connerton LTAC effectively influence the issue?
  - a. Does Connerton LTAC offer related services?
  - b. Does Connerton LTAC have the ability to influence the issue through the implementation/expansion of programs, services, and other actions?



## 11.B. Priorities determined by the Community Health Needs Assessment Committee

The Community Health Needs Assessment Committee used the primary and secondary data, the Asset Inventory and the Decision Tree (above) to select priorities for the Connerton LTAC community.

While not noted in the table below, the Committee had a lengthy discussion about the unique nature of the facility. They noted that Connerton LTAC is not a “community” hospital with a defined geographical service area. This created challenges in determining who, other than the hospital’s patients, the “community” really was. They also said Connerton LTAC is the only such facility in the service area and has a 95% occupancy rate – and cited access to LTAC care as a major issue. They also discussed the lack of nearby lodging for patient families that creates a need for LTAC transportation, and a higher-than-average family/caregiver burnout and compassion fatigue.

The following chart reflects the Committee’s effort and recommendations.

Health Issue	(high, medium or low)			Addressed by other Community Groups?	LTAC Capacity to Impact?	Issue Selected yes or no	Rationale Yes or no
	Acuity Level in PSA	Acuity Level 65+	Acuity Level south Pasco				
<b>Access to primary care / un- and underinsured</b>	M	L	L	Y	N	N	No LTAC capacity
<b>Access to dental care</b>					N	N	No LTAC capacity, not a patient need
<b>Caregiver burnout &amp; compassion fatigue</b>	H	H	H	N	Y	YES	LTAC can provide support & education
<b>Cancer</b>	H	H	H	Y	N	N	LTAC can refer to community resources and other Florida Hospitals
<b>Cancer – melanoma</b>	H	M	H	Y	N	N	LTAC can refer to community resources and other Florida Hospitals
<b>Chronic Disease – diabetes</b>	H	H	H	Y	N	YES	LTAC can refer to other FH facilities
<b>Chronic Disease – respiratory / asthma</b>	H	H	H	Y	N	YES	LTAC can refer to other FH facilities
<b>Communicable Diseases – reporting</b>	L	L	L	Y	N	N	Hillsborough DOH responsibility & priority
<b>Communicable Diseases – immunizations all</b>	L	M	M	Y	N	N	DOH responsibility & priority
<b>Communicable Diseases – immunizations pre-K</b>	M	M	L	Y	N	N	DOH responsibility & priority
<b>Health literacy &amp; education</b>	M	M	L	Y	N	N	No LTAC capacity, translators available
<b>Heart disease &amp; stroke</b>	H	H	H	Y	N	N	LTAC can refer to other FH facilities
<b>Infant death &amp; low birth weight babies</b>	M	L	L	Y	N	N	No LTAC capacity
<b>Injury &amp; Violence – unintentional injuries</b>	H	H	M	Y	N	N	No LTAC capacity
<b>Injury &amp; Violence – motor vehicle accidents</b>	H	M	M	Y	N	N	No LTAC capacity
<b>Obesity</b>	H	M	H	Y	N	N	LTAC can refer to other FH facilities
<b>Lodging – lack of nearby lodging for LTAC families</b>	M	M	H	N	via Advocacy	YES	LTAC can reach out to the EDC

(high, medium or low)							
Health Issue	Acuity Level in PSA	Acuity Level 65+	Acuity Level south Pasco	Addressed by other Community Groups?	LTAC Capacity to Impact?	Issue Selected yes or no	Rationale Yes or no
<b>Smoking</b>	H	H	H	Y	N	N	Multiple community resources for cessation
<b>Social &amp; Mental Health – substance abuse</b>	H	M	M	Y	N	N	No LTAC capacity
<b>Social &amp; Mental Health – suicide</b>	M	L	L	Y	N	N	No LTAC capacity
<b>Transportation – LTAC families</b>	H	M	H	N	Y	YES	LTAC can provide transportation
<b>Transportation – general</b>	M	H	H	N	N	N	No LTAC capacity

## 11. COMMUNITY HEALTH PRIORITIES FOR CONNERTON LTAC

The Community Health Needs Assessment Committees top priorities for Florida Hospital at Connerton LTAC are:

5. Family/caregiver burnout and compassion fatigue
6. Community support and referrals for chronic disease – diabetes
7. Community support and referrals for chronic disease – respiratory/asthma
8. Transportation for LTAC families

Connerton LTAC will also advocate to the Economic Development Commission re the feasibility of closer lodging for LTAC families.

## 12. CONNERTON LTAC COMMUNITY HEALTH PLAN

After identifying the priority issues for Florida Hospital at Connerton Long Term Care facility, the Community Health Needs Assessment Committee developed a Community Health Plan (implementation strategies) to address the top priorities defined in the Needs Assessment.

The Community Health Plan can be found on this same web site.